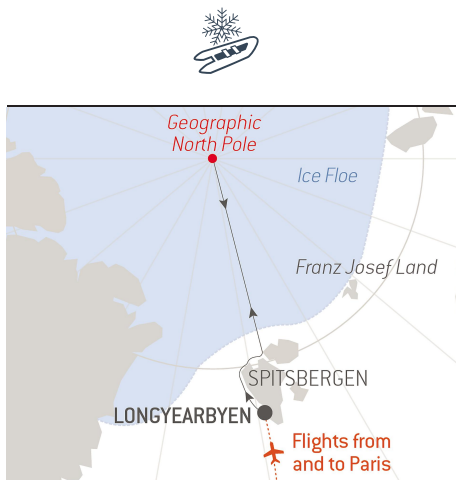


The Geographic North Pole

From **8/8/2021**
to **8/23/2021**

Ship: **LE COMMANDANT CHARCOT**

From **Longyearbyen, Spitsbergen**
to **Longyearbyen, Spitsbergen**



Flight Paris/Longyearbyen + transfers + flight
Longyearbyen/Paris

Push the limits of sailing with this exceptional new 16-day expedition cruise to the **Geographic North Pole**.

To reach this mythical point covered by ice floe all year round, 700 km away from any emerged land, you will board *Le Commandant-Charcot*, the first hybrid electric polar exploration vessel.

Setting sail from Spitzbergen, you will enjoy an unforgettable maritime experience at the heart of sumptuous landscapes that are constantly evolving according to changes in the ice and the light. This itinerary, which lends itself perfectly to the observation of the **wildlife, particularly rich at this time of the year**, will take you as far as the **pack ice**. Then you will slowly progress to the heart of this silent world, frozen by the extreme cold, in the direction of the Grail of all polar explorers: the North Pole!

As the ice floe is constantly drifting, driven together by currents and winds, you too must keep moving if you want to remain on our planet's most northernmost point...

We are privileged guests in these extreme lands where we are at the mercy of weather and ice conditions. The itinerary, landings on certain sites and the observation of certain wildlife cannot be guaranteed. They vary from day to day, making each PONANT cruise a unique experience. The Captain and the Expedition Leader will make every effort to ensure that your experience is as rich as possible, while complying with the safety rules and instructions imposed by the AECO.



The information in this document is valid as of 2/26/2021

The Geographic North Pole

YOUR STOPOVERS :

LONGYEARBYEN, SPITSBERGEN

Embarkation 8/8/2021 from 16h00 to 17h00

Departure 8/8/2021 at 18h00

Longyearbyen is the capital of the Norwegian **Svalbard** archipelago, located on **Svalbard's** main island, and is the northernmost territorial capital on the planet. With winter temperatures dropping to below 40°C, the landscapes of this mining town are simply breathtaking. The glaciers, the mountains stretching as far as the eye can see and the untouched nature, make you feel like you're in completely unexplored territory.

AT SEA ALONG SPITSBERGEN

Arrival 8/9/2021

Departure 8/9/2021

The largest island in the Svalbard archipelago, its name meaning "pointed mountains" in German, **Spitsbergen** is the last piece of land before the Arctic ice floe. Aboard your ship, you will sail along the extremely spectacular coastline of this icy land. Between **millennial glaciers** and **rugged mountains**, you will discover a **jagged coastline, hollowed-out by fjords**. A unique setting, the refuge of a particularly rich avifauna, offering you the possibility of taking fabulous photographs from the deck of your ship.

SAILING ICE FLOES

Arrival 8/10/2021

Departure 8/14/2021

Enjoy the absolutely unique experience of sailing to the heart of the **ice floe**, this **vast expanse of virgin, immaculate ice**. The landscapes are constantly changing, shifting from a smooth, flat wilderness to a chaos of ice, then to channels of open water. Your ship will sail along these naturally open channels and through the areas where the frozen layer is thinnest, offering you the chance to experience magic maritime moments in the midst of drifting sea ice. It will also often be an opportunity to see a particular kind of fauna, totally dependent on the ice floe.

GEOGRAPHIC NORTH POLE

Arrival 8/15/2021

Departure 8/15/2021

Defined by a 90° North latitude, the Geographic North Pole lies on the Earth's rotational axis, at the intersection of all meridians. Plunged into darkness for six months of the year, then lit by the sun for the following six months, this **mythical site, permanently covered in ice** and remote from any land, has fascinated generations of explorers. So far, only a very few people have ever reached it: an exploit which is now accessible to you aboard the *Commandant-Charcot*

SAILING ICE FLOES

Arrival 8/16/2021

Departure 8/20/2021

Enjoy the absolutely unique experience of sailing to the heart of the **ice floe**, this **vast expanse of virgin, immaculate ice**. The landscapes are constantly changing, shifting from a smooth, flat wilderness to a chaos of ice, then to channels of open water. Your ship will sail along these naturally open channels and through the areas where the frozen layer is thinnest, offering you the chance to experience magic maritime moments in the midst of drifting sea ice. It will also often be an opportunity to see a particular kind of fauna, totally dependent on the ice floe.

AT SEA ALONG SPITSBERGEN

Arrival 8/21/2021

Departure 8/22/2021

The largest island in the Svalbard archipelago, its name meaning “pointed mountains” in German, **Spitsbergen** is the last piece of land before the Arctic ice floe. Aboard your ship, you will sail along the extremely spectacular coastline of this icy land. Between **millennial glaciers** and **rugged mountains**, you will discover a **jagged coastline, hollowed-out by fjords**. A unique setting, the refuge of a particularly rich avifauna, offering you the possibility of taking fabulous photographs from the deck of your ship.

LONGYEARBYEN, SPITSBERGEN

Arrival 8/23/2021 early morning

Disembarkation 8/23/2021 at 07h00

Longyearbyen is the capital of the Norwegian **Svalbard** archipelago, located on **Svalbard's** main island, and is the northernmost territorial capital on the planet. With winter temperatures dropping to below 40°C, the landscapes of this mining town are simply breathtaking. The glaciers, the mountains stretching as far as the eye can see and the untouched nature, make you feel like you're in completely unexplored territory.