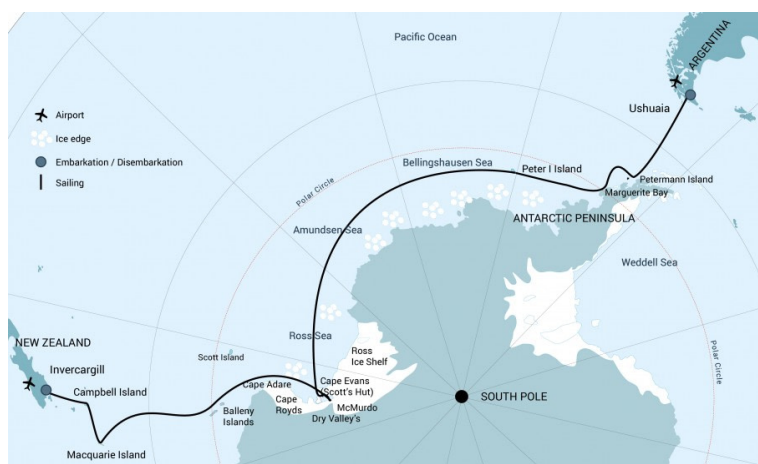


# Ross Sea | Incl. helicopters - Campbell Island - Macquarie Island - Polar Circle - Ross Sea - Peter I Island - Antarctic Peninsula

Experience some of the far south's most scenic locations on both sides of the antarctic circle, including Macquarie Island, Campbell Island, and Antarctica's seldom-visited Ross Sea, which we plan to explore with helicopters



Title:	Ross Sea   Incl. helicopters - Campbell Island - Macquarie Island - Polar Circle - Ross Sea - Peter I Island - Antarctic Peninsula
Dates:	17 Feb - 20 Mar, 2023
Tripcode:	OTL28-23
Duration:	31 nights
Ship:	m/v Ortelius
Embarkation:	Bluff, New Zealand
Disembarkation:	Ushuaia
Language:	English speaking voyage
Important:	Crossing the International Date Line

## ITINERARY

*PLEASE NOTE: All itineraries are for guidance only. Programs may vary depending on ice, weather, and wildlife conditions. Landings are subject to site availabilities, permissions, and environmental concerns per IAATO regulations. Official sailing plans and landing slots are scheduled with IAATO prior to the start of the season, but the expedition leader determines the final plan. Flexibility is paramount for expedition cruises. Special note about landing permits: Landings at the Macquarie Islands, Campbell Islands, and McMurdo Station may have limitations and are subject to change. Additional sites like the Balleny Islands as well as extra time in the Ross Sea may be offered as an alternative. The average cruising speed of our vessel is 10.5 knots.*

Sail to the southern parts of the Antarctic Peninsula, Peter I Island, the Bellingshausen and Amundsen Seas into the Ross Sea. Visiting the Ross Ice-shelf, Dry Valleys, McMurdo Station, Macquarie Island, Campbell Island and the historic huts of Scott and Shackleton.

### Helicopter transfers: -

*During these voyages, we transfer our passengers to shore using Zodiacs. We also operate our two helicopters in sites where Zodiacs cannot be used. Potential areas for helicopter transfer are Cape Evans (the location of Scott's hut), Cape Royds (the location of Shackleton's hut), the Ross Ice Shelf, Peter I Island, and the Dry Valleys.*

*Our plan is to make five helicopter-based landings, though a specific amount of helicopter time cannot be guaranteed in advance. Helicopters provide us a great advantage in reaching certain landing sites that are otherwise almost inaccessible, but this is a true expedition in the world's most remote area: weather, ice, and other forces of nature dictate the final itinerary. Conditions may change rapidly, impacting helicopter operations. Please understand and accept this. Safety is our greatest concern, and no compromises can be made.*

*The vessel is equipped with two helicopters. If one helicopter is unable to fly for whatever reason, helicopter operations will cease or be cancelled. One helicopter always needs to be supported by a second functioning helicopter. No guarantees can be given, and in no event will claims be accepted.*

### Special note: Crossing the International Date Line

Depending on which direction one travels across the International Date Line, a day is either lost or gained. (Crossing westward, a day is gained; crossing eastward, a day is lost.) Please take note of this when calculating your actual time travelled. The days listed in the itinerary duration reflect the actual time travelled.

### Day 1: New Zealand's southernmost town

Your voyage begins in Bluff, commonly held to be New Zealand's most southerly town. Sailing beyond the boundaries of the civilized world, you venture into the untamed regions of the far south.

## **Day 2: Sailing south with the seabirds**

Seabirds trail your vessel across limitless horizons toward Campbell Island.

## **Day 3: Campbell Island's bounteous birdlife**

The plan today is to visit the sub-Antarctic New Zealand Reserve and UNESCO World Heritage Site of Campbell Island, enjoying its luxuriantly blooming vegetation. The fauna on Campbell Island is also a highlight, with a large and easily accessible colony of southern royal albatrosses on the main island. Breeding on the satellite islands are wandering, Campbell, grey-headed, black-browed, and light-mantled albatrosses. There are also three breeding penguin species present: eastern rockhopper, erect-crested, and yellow-eyed penguins. In the 18th century, seals in the area were hunted to extinction, but the elephant seals, fur seals, and sea lions have since recovered.

## **Day 4: Northwest by sea**

You now sail northwest, again followed by numerous species of seabird.

## **Day 5: Macca aka Macquarie Island**

Macca, also known as Macquarie Island, is a Tasmanian State Reserve that in 1997 became a World Heritage Site. The Australian Antarctic Division has its permanent base on this island, which Australian sealer Frederick Hasselborough discovered while searching for new sealing grounds. The fauna on Macquarie is fantastic, and there are colonies of king, gentoo, and southern rockhopper penguins – as well as almost one million breeding pairs of the endemic royal penguin. Elephant seals and various fur seal species, such as the New Zealand fur seal, are also present.

## **Day 6 – 8: Once more to the Southern Ocean**

You once again enter the vast expanse of the Southern Ocean. Sea birds are also prolific on this leg, during which we hope to enjoy good weather conditions.

## **Day 9: The windswept Balleny Islands**

Your intended route is past Sturge Island in the afternoon, getting an impression of these windswept and remote islands before crossing the Antarctic Circle.

## **Day 10: Across the seas to the Antarctic Continent**

By now you've become a veteran of the high seas, if you weren't when you started the voyage. You spend today sailing toward the Antarctic Continent.

## **Day 11: The residents of Cape Adare**

You next attempt a landing at Cape Adare, where for the first time humans wintered on the Antarctic Continent: The Norwegian Borchgrevink stayed in here 1899, taking shelter in a hut that to this day is surrounded by the largest colony of Adélie penguins in the world.

## **Day 12: Cape Hallett's abundant Adélie**

Sailing south along the west coast of the Ross Sea, you may attempt a landing at the protected area of Cape Hallett and its large Adélie penguin rookery.

## **Day 13: Exploring the inexpressible**

If sea ice permits, you land at Inexpressible Island, which has a fascinating history in connection to the less-known Northern Party of Captain Scott's expedition. It is also home to a sizable Adélie penguin rookery. You may also head farther south toward the impressive Drygalski Ice Tongue if ice conditions prevent entry into Terra Nova Bay.

## **Day 14 – 16: Highlights of the Ross Sea**

Keeping to the Ross Sea, your aim is now to visit Ross Island. In this location you can see Mount Erebus, Mount Terror, and Mount Byrd, as well as many other famous spots that played an important role in the British expeditions of the last century: Cape Royds, where Ernest Shackleton's cabin still stands; Cape Evans, where the cabin of Robert Falcon Scott can still be seen; and Hut Point, from which Scott and his men set out for the South Pole.

If ice is blocking the way but weather conditions are favorable, you may use the helicopters to land in one or more spots in this area. The American scientific base of McMurdo Station and New Zealand's Scott Base are other possible locations you might visit. From McMurdo Station you could also make a 10-km hike (6 miles) to Castle Rock, where there are great views across the Ross Ice Shelf toward the South Pole. Additionally, you may make a helicopter landing in Taylor Valley, one of the Dry Valleys, where conditions are closer to Mars than anywhere else on Earth.

### **Day 17 – 18: The epic Ross Ice Shelf**

The next goal is to enter the Ross Sea from the east, venturing south toward the Bay of Whales and close to Roosevelt Island (named in 1934 by the American aviator Richard E. Byrd for President Franklin D. Roosevelt). The Bay of Whales is part of the Ross Ice Shelf, the largest ice shelf in the world, and is constantly changing with the receding ice masses. Large icebergs are present here, along with great wildlife opportunities. Roald Amundsen gained access to the shelf en route to the South Pole, which he reached on December 14, 1911. Also, the Japanese explorer Nobu Shirase had his camp in this area in 1912, at Kainan Bay. You may make a helicopter landing on the ice shelf if conditions allow. During this part of the voyage, we will also cross the International Date Line.

### **Day 19 – 25: Sights of the Amundsen Sea**

You then sail through the Amundsen Sea, moving along and through the outer fringes of the pack ice. Ice conditions are never the same from year to year, though we aim to take advantage of the opportunities that arise if sea ice is present. Emperor penguins, groups of seals lounging on the ice floes, orca and minke whales along the ice edge, and different species of fulmarine petrels are possible sights in this area.

### **Day 26: A rare glimpse of Peter I Island**

Known as Peter I Øy in Norwegian, this is an uninhabited volcanic island in the Bellingshausen Sea. It was discovered by Fabian von Bellingshausen in 1821 and named after Peter the Great of Russia. The island is claimed by Norway and considered its own territory, though it is rarely visited by passenger vessels due to its exposed nature. If weather and ice conditions allow, you may enjoy a helicopter landing on the glaciated northern part of the island. This is a unique chance to land on one of the most remote islands in the world.

### **Day 27 – 28: Braving the Bellingshausen**

You now sail across Bellingshausen Sea, bound for the Antarctic Peninsula.

### **Day 29: Through the Pendleton Strait**

You arrive at the Antarctic Peninsula near the Antarctic Circle in the afternoon. If sea ice allows it, you can then continue through Pendleton Strait and attempt a landing at the rarely visited southern tip of Renaud Island. Here you have the opportunity to see the first Adélie penguins of the trip as well as enjoy spectacular views of the icebergs in this surreal, snow-swept environment.

### **Day 30 – 32: North via the Drake**

Over the following days on the Drake Passage, you enjoy some of the same experiences encountered by the great polar explorers who first charted these regions: cool salt breezes, rolling seas, maybe even a fin whale spouting up sea spray. After passing the Antarctic Convergence – Antarctica's natural boundary, formed when north-flowing cold waters collide with warmer sub-Antarctic seas – you are in the circum-Antarctic upwelling zone. Wandering albatrosses, grey-headed albatrosses, black-browed albatrosses, light-mantled sooty albatrosses, cape pigeons, southern fulmars, Wilson's storm petrels, blue petrels, and Antarctic petrels are a few of the birds you might see.

### **Day 33: End of the world, last of the journey**

Every adventure, no matter how grand, must eventually come to an end. It's now time to disembark in Ushuaia, reputed to be the southernmost town in the world, and return home with memories that will accompany you wherever your next adventure lies.

**Included in this voyage**

- Voyage aboard the indicated vessel as indicated in the itinerary
- All meals throughout the voyage aboard the ship including snacks, coffee and tea.
- All shore excursions and activities throughout the voyage by Zodiac.
- Program of lectures by noted naturalists and leadership by experienced expedition staff.
- Free use of rubber boots and snowshoes.
- Ship-to-shore helicopter transfers (with no specific amount of helicopter time guaranteed)
- Group transfer from Kelvin Hotel in Invercargill to the vessel in Bluff.
- Group transfer from the vessel to the airport in Ushuaia (directly after disembarkation).
- All miscellaneous service taxes and port charges throughout the programme.
- Comprehensive pre-departure material.

**Excluded from this voyage**

Any airfare, whether on scheduled or charter flights

Pre- and post- land arrangements.

Passport and visa expenses.

Government arrival and departure taxes.

Meals ashore.

Baggage, cancellation and personal insurance (which is strongly recommended).

Excess baggage charges and all items of a personal nature such as laundry, bar, beverage charges and telecommunication charges.

The customary gratuity at the end of the voyages for stewards and other service personnel aboard (guidelines will be provided).

# CABINS & PRICES

## Quadruple Porthole



2 portholes  
 2 upper / lower berths  
 Private shower & toilet  
 Desk & chair  
 Flatscreen TV  
 Telephone & WiFi (supplemented)  
 Hair dryer  
 Ample storage space



Complete cabin  
 Price for the complete cabin, fully occupied.

113800 USD



Sharing berth  
 Share your cabin with others for the best price

28450 USD

## Triple Porthole



2 portholes  
 1 upper / lower berth + 1 single lower berth  
 Private shower & toilet  
 Desk & chair  
 Flatscreen TV  
 Telephone & WiFi (supplemented)  
 Hair dryer  
 Ample storage space



Complete cabin  
 Price for the complete cabin, fully occupied.

107400 USD



Sharing berth  
 Share your cabin with others for the best price

35800 USD

## Twin Porthole



2 portholes  
 2 lower berths  
 Private shower & toilet  
 Desk & chair  
 Flatscreen TV  
 Telephone & WiFi (supplemented)  
 Hair dryer  
 Ample storage space



Complete cabin  
 Price for the complete cabin, fully occupied.

71600 USD



Single cabin  
 Price for the complete cabin occupied by 1 person (1.7x the shared rate).

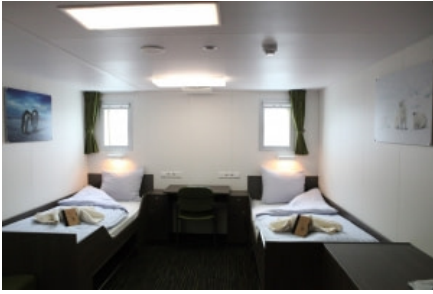
60860 USD



Sharing berth  
 Share your cabin with others for the best price

35800 USD

## Twin Window



2 windows  
2 lower berths  
Private shower & toilet  
Desk & chair  
Flatscreen TV  
Telephone & WiFi (supplemented)  
Hair dryer  
Ample storage space



Complete cabin  
Price for the complete cabin, fully occupied. 74300 USD



Single cabin  
Price for the complete cabin occupied by 1 person (1.7x the shared rate). 63155 USD



Sharing berth  
Share your cabin with others for the best price 37150 USD

## Twin Deluxe



3 windows  
2 lower berths  
Private shower & toilet  
Desk & chair  
Small sofa  
Refrigerator  
Coffee & tea maker  
Flatscreen TV  
Telephone & WiFi (supplemented)  
Hair dryer  
Ample storage space



Complete cabin  
Price for the complete cabin, fully occupied. 77900 USD



Single cabin  
Price for the complete cabin occupied by 1 person (1.7x the shared rate). 66215 USD



Sharing berth  
Share your cabin with others for the best price 38950 USD

## Superior



2 windows (minimum)  
1 double bed  
1 single (sofa) bed  
Private shower & toilet  
Desk & chair  
Flatscreen TV  
Telephone & WiFi (supplemented)  
Refrigerator  
Coffee & tea maker  
Hair dryer  
Ample storage space



Complete cabin  
Price for the complete cabin, fully occupied. 81900 USD



Single cabin  
Price for the complete cabin occupied by 1 person (1.7x the shared rate). 69615 USD