

North Spitsbergen, In search of Polar Bear & Pack Ice - Birding

The best opportunity to spot the King of the Arctic



Title:	North Spitsbergen, In search of Polar Bear & Pack Ice - Birding
Dates:	2 Jun - 9 Jun, 2022
Tripcode:	HDS02-22
Duration:	7 nights
Ship:	m/v Hondius
Embarkation:	Longyearbyen
Disembarkation:	Longyearbyen
Language:	English speaking voyage

ITINERARY

PLEASE NOTE: All itineraries are for guidance only. Programs may vary depending on ice, weather, and wildlife conditions. Landings are subject to site availabilities, permissions, and environmental concerns per AECO regulations. Official sailing plans and landing slots are scheduled with AECO prior to the start of the season, but the expedition leader determines the final plan. Flexibility is paramount for expedition cruises. The average cruising speed of our vessel is 10.5 knots.

Start your North Spitsbergen cruise with a trek around historic Longyearbyen, then join our expedition to the north of the island to take in the fantastically beautiful landscapes, the thousands of seabirds, and of course the star of the show, the polar bear.

Birding: -

We will have at least one dedicated expedition guide in our team who will share their expert knowledge about bird species and who will be available to help you identify, photograph on deck and learn more about the birds that we see. In addition to outdoor sessions, our guide will focus on species and related information on the birds of the Arctic in re-caps and lectures onboard.

Day 1: Largest town, biggest island

You touch down in Longyearbyen, the administrative center of Spitsbergen, the largest island of the Svalbard archipelago. Enjoy strolling around this former mining town, whose parish church and Svalbard Museum make for fascinating attractions. Though the countryside appears stark, more than a hundred species of plant have been recorded in it. In the early evening the ship sails out of Isfjorden, where you might spot the first minke whale of your voyage.

Day 2: Route to Raudfjorden

Sailing to Raudfjorden, on the north coast of Spitsbergen, you take in an expansive fjord spilling with glaciers – and maybe even visited by ringed and bearded seals. The cliffs and shoreline of this fjord also support thriving seabird colonies, rich vegetation, and the possibility of polar bears.

Day 3: The massive Monaco Glacier

Depending on the weather, you could sail into Liefdefjorden and cruise within sight of the 5-kilometer-long (3.1 miles) face of the precipitous Monaco Glacier. The waters in front of this glacier are a favorite feeding spot for thousands of kittiwakes, and the base of the ice is a popular polar bear hunting ground. If ice conditions prevent sailing here early in the season, an alternate route along the west coast of Spitsbergen can be implemented.

Day 4: Highlights of Hinlopen

Today you sail into Hinlopen Strait, home to bearded seals, ringed seals, and polar bears. At the entrance there is even the possibility to spot blue whales. After cruising among the ice floes of Lomfjordshalvøya in the Zodiacs, you can view the bird cliffs of Alkefjellet with their thousands of Brünnich's guillemots. On the east side of Hinlopen Strait, you may attempt a landing on Nordaustlandet. Here reindeer, pink-footed geese, and walrus are likely sights. You can take an alternate route if ice prevents entry into Hinlopen.

Day 5: Stop at the Seven Islands

The northernmost point of your voyage may be north of Nordaustlandet, in the Seven Islands. Here you reach 80° north, just 870 km (540 miles) from the geographic North Pole. Polar bears inhabit this region, so the ship may park for several hours among the pack ice before wheeling around west again.

Day 6: Sailing the continental shelf

While retracing your route west, keep watch for polar bears and elusive Greenland (bowhead) whales. About 40 nautical miles west of Spitsbergen, you sail the edge of the continental shelf. Here fin whales forage during the summer in the upwelling zones (where cold, nutrient-rich water wells up from below the sea's surface) that run along the Spitsbergen banks. At the mouth of Kongsfjorden, you have a good chance of sighting minke whales.

Day 7: Reindeer, foxes, and so many seabirds

Walrus sometimes haul out in Forlandsundet, your next stop. Alternatively, you might sail into St. Johns Fjord or south to the mouth of Isfjorden, landing at Alkhorneret. Seabirds nest on these cliffs, Arctic foxes search below for fallen eggs and chicks, and reindeer graze the sparse vegetation. You arrive in Longyearbyen later at night.

Day 8: There and back again

Every adventure, no matter how grand, must eventually come to an end. You disembark in Longyearbyen, taking home memories that will accompany you wherever your next adventure lies.

Included in this voyage

- Voyage aboard the indicated vessel as indicated in the itinerary
- All meals throughout the voyage aboard the ship including snacks, coffee and tea.
- All shore excursions and activities throughout the voyage by Zodiac.
- Program of lectures by noted naturalists and leadership by experienced expedition staff.
- Free use of rubber boots and snowshoes.
- Transfers and baggage handling between the airport, hotels and ship only for those passengers on the group flights to and from Longyearbyen.
- All miscellaneous service taxes and port charges throughout the programme.
- AECO fees and governmental taxes.
- Comprehensive pre-departure material.

Excluded from this voyage

Any airfare, whether on scheduled or charter flights

Pre- and post- land arrangements.

Passport and visa expenses.

Government arrival and departure taxes.

Meals ashore.

Baggage, cancellation and personal insurance (which is strongly recommended).

Excess baggage charges and all items of a personal nature such as laundry, bar, beverage charges and telecommunication charges.

The customary gratuity at the end of the voyages for stewards and other service personnel aboard (guidelines will be provided).

ACTIVITIES YOU CAN PARTICIPATE IN

Snowshoeing

FREE



Snowshoe walking is easy and does not require any technical skills. The snowshoes will fit all boot sizes and can be used in combination with Oceanwide's rubber boots

Birding

FREE



We will have at least one dedicated expedition guide in our team who will share their expert knowledge about bird species and who will be available to help you identify, photograph and learn more about the birds that we see.

CABINS & PRICES

Quadruple Porthole



- 2 portholes
 - 2 upper & lower berths
 - Small sofa
 - Private shower & toilet
 - Flatscreen TV
 - Desk & chair
 - Telephone and WiFi (supplemented)
 - Hair dryer
 - Cabinet
 - Wardrobe
- This cabin is suitable for families traveling with children, or passengers who do not require a twin or more luxurious cabin



Complete cabin
Price for the complete cabin, fully occupied.

15400 USD



Sharing berth
Share your cabin with others for the best price

3850 USD

Triple Porthole



- 2 portholes
 - 1 upper berth & 2 lower berths
 - Small sofa
 - Private shower & toilet
 - Flatscreen TV
 - Desk & chair
 - Telephone and WiFi (supplemented)
 - Hair dryer
 - Cabinet
 - Wardrobe
- This cabin is suitable for families traveling with children, or passengers who do not require a twin or more luxurious cabin



Complete cabin
Price for the complete cabin, fully occupied.

14250 USD



Sharing berth
Share your cabin with others for the best price

4750 USD

Twin Porthole



- 2 portholes
- 2 single beds
- Small sofa
- Private shower & toilet
- Flatscreen TV
- Desk & chair
- Telephone and WiFi (supplemented)
- Hair dryer
- Cabinet
- Wardrobe



Complete cabin
Price for the complete cabin, fully occupied.

10600 USD



Single cabin
Price for the complete cabin occupied by 1 person (1.7x the shared rate).

9010 USD



Sharing berth
Share your cabin with others for the best price

5300 USD

Twin Window



1 window
2 single beds
Small sofa
Private shower & toilet
Flatscreen TV
Desk & chair
Telephone and WiFi (supplemented)
Hair dryer
Cabinet
Wardrobe
Please be aware that the view from some windows might be partially obstructed due to the design requirements of the ship



Complete cabin
Price for the complete cabin, fully occupied.

11500 USD



Single cabin
Price for the complete cabin occupied by 1 person (1.7x the shared rate).

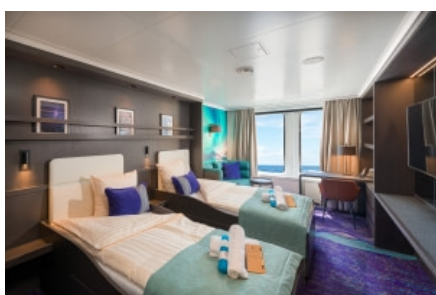
9775 USD



Sharing berth
Share your cabin with others for the best price

5750 USD

Twin Deluxe



2 windows
2 single beds
Sofa
Private shower & toilet
Flatscreen TV
Desk & chair
Telephone and WiFi (supplemented)
Refrigerator
Coffee & tea maker
Bathrobe
Hair dryer
Cabinet
Wardrobe



Complete cabin
Price for the complete cabin, fully occupied.

12200 USD



Single cabin
Price for the complete cabin occupied by 1 person (1.7x the shared rate).

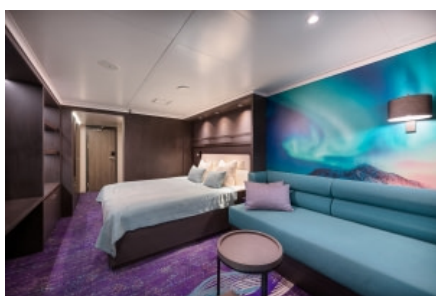
10370 USD



Sharing berth
Share your cabin with others for the best price

6100 USD

Superior



2 windows
1 double bed
Sofa
Private shower & toilet
Flatscreen TV
Desk & chair
Telephone and WiFi (supplemented)
Refrigerator
Coffee & tea maker
Bathrobe
Hair dryer
Cabinet
Wardrobe



Complete cabin
Price for the complete cabin, fully occupied.

13800 USD



Single cabin
Price for the complete cabin occupied by 1 person (1.7x the shared rate).

11730 USD

Junior Suite



1 double window
1 double bed
Private shower & toilet
Flatscreen TV
Desk & chair
Telephone and WiFi (supplemented)
Refrigerator
Coffee & tea maker
Bathrobe
Hair dryer
Cabinet
Wardrobe



Complete cabin
Price for the complete cabin, fully occupied.

14800 USD



Single cabin
Price for the complete cabin occupied by 1 person (1.7x the shared rate).

12580 USD

Grand Suite with private balcony



1 double window
1 double bed
Sofa
Private balcony
Private shower & toilet
Flatscreen TV
Desk & chair
Telephone and WiFi (supplemented)
Refrigerator
Coffee & tea maker
Bathrobe
Hair dryer
Cabinet
Wardrobe



Complete cabin
Price for the complete cabin, fully occupied.

17100 USD



Single cabin
Price for the complete cabin occupied by 1 person (1.7x the shared rate).

14535 USD