

North Spitsbergen - Basecamp, Free kayaking, hiking, photo workshop

The best activity voyage in the Arctic



Title:	North Spitsbergen - Basecamp, Free kayaking, hiking, photo workshop
Dates:	27 Jun - 4 Jul, 2022
Tripcode:	OTL06-22
Duration:	7 nights
Ship:	m/v Ortelius
Embarkation:	Longyearbyen
Disembarkation:	Longyearbyen
Language:	English speaking voyage

ITINERARY

PLEASE NOTE: All itineraries are for guidance only. Programs may vary depending on ice, weather, and wildlife conditions. Landings are subject to site availabilities, permissions, and environmental concerns per AECO regulations. Official sailing plans and landing slots are scheduled with AECO prior to the start of the season, but the expedition leader determines the final plan. Flexibility is paramount for expedition cruises. The average cruising speed of our vessel is 10.5 knots.

The North Spitsbergen Basecamp cruise offers you a myriad of ways to explore and enjoy this Arctic Region. This expedition allows you to hike, snowshoe, kayak, and learn to take perfect pictures of the polar flora and fauna.

Background on Basecamp cruises: -

Our Basecamp voyages focus on land and near-shore activities with minimal disturbance to local wildlife. If time and conditions permit, the expedition team will also look for wildlife opportunities whenever possible.

By definition, a basecamp is a temporary camp from which expeditions or other outdoor activities can be carried out. During our designated Basecamp cruises, the ship navigates to carefully chosen areas around North Spitsbergen, staying in fewer locations than during our regular trips so that it can serve as a comfortable hub for multiple outdoor activities.

Hikers (H) can embark on vigorous walks in the backcountry, photographers (P) can capture the dramatic surroundings in pictures, and kayakers (K) can explore waterways through which the ship cannot always sail. Passengers who do not wish to engage in these activities can enjoy Zodiac excursions and easy-to-moderate shoreline walks that focus on wildlife.

All activities are free of charge.

Day 1: Largest town, biggest island

You touch down in Longyearbyen, the administrative center of Spitsbergen, the largest island of the Svalbard archipelago. Enjoy strolling around this former mining town, whose parish church and Svalbard Museum make for fascinating attractions. Though the countryside appears stark, more than a hundred species of plant have been recorded in it. In the early evening the ship sails out of Isfjorden, where you might spot the first minke whale of your voyage.

Day 2: Kongsfjorden and Blomstrandhalvøya

On the first day of our activity program, we will slowly ease into things. Blomstrandhalvøya is located on the northern side of the fjord, which will offer shelter and room to change plan in case the weather changes. In the afternoon, you visit Ny Ålesund, one of the northernmost settlements on Earth. Once a mining village served by the world's most northerly railway – you can still see its tracks – Ny Ålesund is now a research center.

Close to the community is a breeding ground for barnacle geese, pink-footed geese, and Arctic terns. And if you're interested in the history of Arctic exploration, visit the anchoring mast used by polar explorers Amundsen and Nobile in their airships, Norge (1926) and Italia (1928). In the evening, we head north along the west coast and spend the night in the sheltered surroundings of Krossfjorden.

Day 3: Exploring the North West

Next to our activities, we will next head toward Amsterdamoya, where you have the chance to hike past the remains of a 17th-century whaling station. You can also enjoy the beautiful panorama of Smeerenburgsleta. In the afternoon, we make for the islands around Fair Haven.

Day 4: Rugged Raudfjorden

At Raudfjorden, on the north coast of Spitsbergen, you can take in an expansive fjord spilling with glaciers – and maybe even visited by ringed and bearded seals. The cliffs and shoreline of this fjord also support thriving seabird colonies, rich vegetation, and the possibility of polar bears. Here we will find the right balance between safe activities and wildlife watching.

Day 5: The stunning sights of Liefdefjorden

Depending on the weather, you could sail into Liefdefjorden and cruise within sight of the 5-kilometer-long (3.1 miles) face of Monaco Glacier. The waters in front of this glacier are a favorite feeding spot for thousands of kittiwakes, and the base of the ice is a popular polar bear hunting ground. If ice conditions prevent sailing here early in the season, we may use an alternate route along the west coast of Spitsbergen. Near the area of Texas Bar and Hornbaekpollen, there are also some great hikes.

Day 6: North Spitsbergen splendors

This is our reserve day for activities around North Spitsbergen. Weather and wildlife permitting, we will choose the right location for another day of splendid outdoor adventures.

Day 7: Forlandsundet or St. Johns Fjord

Forlandsundet, between the main island of Spitsbergen and the narrow Prins Karls Forland, is a place of great beauty and fascinating wildlife. Walrus sometimes haul out here, and seabirds can be found around Fuglehuken. You may also see walrus populations around Sarstangen and Poolepynten. Alternatively, we might sail into St. Johns Fjord or south to the mouth of Isfjorden, landing at Alkhorneret. Seabirds nest on these cliffs, Arctic foxes search below for fallen eggs and chicks, and reindeer graze the sparse vegetation. We will arrive in Longyearbyen later that night.

Day 8: There and back again

Every adventure, no matter how grand, must eventually come to an end. You disembark in Longyearbyen, taking home memories that will accompany you wherever your next adventure lies.

Included in this voyage

- *Voyage aboard the indicated vessel as indicated in the itinerary*
- *All meals throughout the voyage aboard the ship including snacks, coffee and tea.*
- *All shore excursions and activities throughout the voyage by Zodiac.*
- *Program of lectures by noted naturalists and leadership by experienced expedition staff.*
- *Free use of rubber boots and snowshoes.*
- *Transfers and baggage handling between the airport, hotels and ship only for those passengers on the group flights to and from Longyearbyen.*
- *All miscellaneous service taxes and port charges throughout the programme.*
- *AECO fees and governmental taxes.*
- *Comprehensive pre-departure material.*

Excluded from this voyage

Any airfare, whether on scheduled or charter flights

Pre- and post- land arrangements.

Passport and visa expenses.

Government arrival and departure taxes.

Meals ashore.

Baggage, cancellation and personal insurance (which is strongly recommended).

Excess baggage charges and all items of a personal nature such as laundry, bar, beverage charges and telecommunication charges.

The customary gratuity at the end of the voyages for stewards and other service personnel aboard (guidelines will be provided).

ACTIVITIES YOU CAN PARTICIPATE IN

Hiking

FREE



There will be easy, moderate and more demanding walks available in the vicinity of the landing sites. Rubber boots with a grip sole appropriate for hiking will be provided on our motor vessels but not on our smaller sailing vessel- for our sailing vessel you should bring your own sturdy ankle-high hiking boots and gaiters.

Kayaking

FREE



Basic kayaking experience is of advantage, but it is not a requirement. Physical fitness is essential. Kayaking is subject to weather and prevailing ice conditions.

Photo Workshop

FREE



Participants with a special interest in photography will bring their personal photo equipment. The workshop must be pre-booked prior to departure.

CABINS & PRICES

Quadruple Porthole



2 portholes
 2 upper / lower berths
 Private shower & toilet
 Desk & chair
 Flatscreen TV
 Telephone & WiFi (supplemented)
 Hair dryer
 Ample storage space



Complete cabin
 Price for the complete cabin, fully occupied.

15400 USD



Sharing berth
 Share your cabin with others for the best price

3850 USD

Triple Porthole



2 portholes
 1 upper / lower berth + 1 single lower berth
 Private shower & toilet
 Desk & chair
 Flatscreen TV
 Telephone & WiFi (supplemented)
 Hair dryer
 Ample storage space



Complete cabin
 Price for the complete cabin, fully occupied.

15900 USD



Sharing berth
 Share your cabin with others for the best price

5300 USD

Twin Porthole



2 portholes
 2 lower berths
 Private shower & toilet
 Desk & chair
 Flatscreen TV
 Telephone & WiFi (supplemented)
 Hair dryer
 Ample storage space



Complete cabin
 Price for the complete cabin, fully occupied.

9700 USD

10600 USD



Single cabin
 Price for the complete cabin occupied by 1 person (1.7x the shared rate).

4850 USD

9010 USD

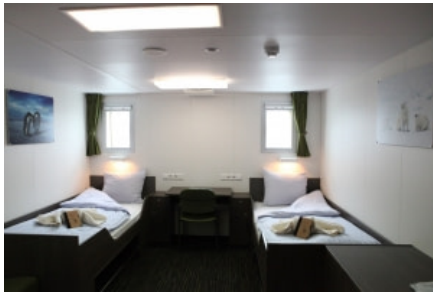


Sharing berth
 Share your cabin with others for the best price

4850 USD

5300 USD

Twin Window



2 windows
2 lower berths
Private shower & toilet
Desk & chair
Flatscreen TV
Telephone & WiFi (supplemented)
Hair dryer
Ample storage space



Complete cabin
Price for the complete cabin, fully occupied. 11500 USD



Single cabin
Price for the complete cabin occupied by 1 person (1.7x the shared rate). 9775 USD



Sharing berth
Share your cabin with others for the best price 5750 USD

Twin Deluxe



3 windows
2 lower berths
Private shower & toilet
Desk & chair
Small sofa
Refrigerator
Coffee & tea maker
Flatscreen TV
Telephone & WiFi (supplemented)
Hair dryer
Ample storage space



Complete cabin
Price for the complete cabin, fully occupied. 12200 USD



Single cabin
Price for the complete cabin occupied by 1 person (1.7x the shared rate). 10370 USD



Sharing berth
Share your cabin with others for the best price 6100 USD

Superior



2 windows (minimum)
1 double bed
1 single (sofa) bed
Private shower & toilet
Desk & chair
Flatscreen TV
Telephone & WiFi (supplemented)
Refrigerator
Coffee & tea maker
Hair dryer
Ample storage space



Complete cabin
Price for the complete cabin, fully occupied. 13800 USD



Single cabin
Price for the complete cabin occupied by 1 person (1.7x the shared rate). 6900 USD
11730 USD