

Antarctica - Polar Circle Discovery and learning voyage

Crossing the Polar Circle



Title:	Antarctica - Polar Circle Discovery and learning voyage
Dates:	2 Mar - 13 Mar, 2022
Tripcode:	HDS31-22
Duration:	11 nights
Ship:	m/v Hondius
Embarkation:	Ushuaia
Disembarkation:	Ushuaia
Language:	English speaking voyage
Important:	Camping, kayaking and diving are optional activities. Experience with cold-water diving and dry-suit dives (at least 30) is a must!

ITINERARY

PLEASE NOTE: All itineraries are for guidance only. Programs may vary depending on local ice and weather conditions and in order to take advantage of opportunities to see wildlife. The on-board expedition leader determines the final itinerary. Itineraries may mention places that require permission to land, which must be granted by the relevant national authorities. Such permission is not granted prior to the publishing of these itineraries. Flexibility is paramount for expedition cruises. Average cruising speed of m/v Hondius is 10,5 knots.

This Polar Circle and Antarctic Peninsula cruise passes through waters travelled by Humpback, Minke and Fin whales. Anchoring in various spots around the region, the expedition offers the chance to hike, kayak, and dive in the iceberg-heavy waters.

Day 1: End of the world, start of a journey

Your voyage begins where the world drops off. Ushuaia, Argentina, reputed to be the southernmost city on the planet, is located on the far southern tip of South America. Starting in the afternoon, you embark from this small resort town on Tierra del Fuego, nicknamed “The End of the World,” and sail the mountain-fringed Beagle Channel for the remainder of the evening.

Day 2 - 3: Path of the polar explorers

Over the next two days on the Drake Passage, you enjoy some of the same experiences encountered by the great polar explorers who first charted these regions: cool salt breezes, rolling seas, maybe even a fin whale spouting up sea spray. After passing the Antarctic Convergence – Antarctica’s natural boundary, formed when north-flowing cold waters collide with warmer sub-Antarctic seas – you are in the circum-Antarctic upwelling zone. Not only does the marine life change, the avian life changes too. Wandering albatrosses, grey-headed albatrosses, black-browed albatrosses, light-mantled sooty albatrosses, cape pigeons, southern fulmars, Wilson’s storm petrels, blue petrels, and Antarctic petrels are a few of the birds you might see.

Day 4 - 9: Sights of late summer Antarctica

Options for Antarctic Peninsula activities are many, and no less great during the late summer. Humpback whales are prolific in this region, gorging themselves on krill before their migration north. The penguin chicks are also fledging, stirring up activity on the beaches while sleek leopard seals lie in wait, poised to attack the less fortunate ones.

Sites for your Antarctic adventures may include:

Livingston Island – Here you find a wide variety of gentoo and chinstrap penguins on Hannah Point, as well as southern giant petrels and elephant seals hauling out onto the beach.

Deception Island – Actually a subducted crater, this island opens into the sea and creates a natural harbor for the ship. Hot springs, an abandoned whaling station, and multiple bird species – cape petrels, kelp gulls, brown and south polar skuas, and Antarctic terns – can be seen here. Wilson’s storm petrels and black-bellied storm petrels also nest in the ruins of the whaling station in Whalers Bay.

Cuvertville Island – A small precipitous island nestled between the mountains of the Antarctic Peninsula and Rongé Island, Cuvertville houses a large colony of gentoo penguins and breeding pairs of brown skuas.

Neko Harbour – An epic landscape of mammoth glaciers and endless wind-carved snow, Neko Harbour offers opportunities for a Zodiac cruise and landing that afford the closest views of the surrounding alpine peaks. You might also be able to set foot on the continent here.

Paradise Bay – You could take a Zodiac cruise in these sprawling, ice-flecked waters, where you have a good chance of seeing humpback and minke whales.

Pléneau & Petermann Islands – If the ice allows it, you may sail through the Lemaire Channel in search of Adélie penguins and blue-eyed shags. There's also a good chance you'll encounter humpback and minke whales as well as leopard seals.

Crystal Sound – Your journey takes you south along the Argentine Islands to this ice-packed body of water, and from here across the Polar Circle in the morning.

Detaille Island – You may make a landing at an abandoned British research station here, taking in the island's lofty mountains and imposing glaciers.

Fish Islands – Further north you encounter one of the southernmost Adélie penguin and blue-eyed shag colonies in the Antarctic Peninsula.

Melchior Islands – These islands offer a beautiful landscape rich with icebergs. Leopard seals, crabeater seals, and whales are found here, and there are excellent opportunities for kayaking and diving.

Conditions on the Drake Passage determine the exact time of departure.

Day 10 - 11: Familiar seas, familiar friends

Your return voyage is far from lonely. While crossing the Drake, you're again greeted by the vast array of seabirds remembered from the passage south. But they seem a little more familiar to you now, and you to them.

Day 12: There and back again

Every adventure, no matter how grand, must eventually come to an end. It's now time to disembark in Ushuaia, but with memories that will accompany you wherever your next adventure lies.

Included in this voyage

- Voyage aboard the indicated vessel as indicated in the itinerary
- All meals throughout the voyage aboard the ship including snacks, coffee and tea.
- All shore excursions and activities throughout the voyage by Zodiac.
- Program of lectures by noted naturalists and leadership by experienced expedition staff.
- Free use of rubber boots and snowshoes.
- Luggage transfer from pick-up point to the vessel on the day of embarkation, in Ushuaia.
- Pre-scheduled group transfer from the vessel to the airport in Ushuaia (directly after disembarkation).
- All miscellaneous service taxes and port charges throughout the programme.
- Comprehensive pre-departure material.

Excluded from this voyage

Any airfare, whether on scheduled or charter flights

Pre- and post- land arrangements.

Passport and visa expenses.

Government arrival and departure taxes.

Meals ashore.

Baggage, cancellation and personal insurance (which is strongly recommended).

Excess baggage charges and all items of a personal nature such as laundry, bar, beverage charges and telecommunication charges.

The customary gratuity at the end of the voyages for stewards and other service personnel aboard (guidelines will be provided).

ACTIVITIES YOU CAN PARTICIPATE IN

Diving

535 USD

2 places left



You must be advanced and experienced in dry suit and cold water diving. Diving is subject to local ice and weather conditions.

Camping

ON REQUEST



Special gear and field equipment will be provided. Camping is subject to weather, local site and environmental regulations.

Kayaking

ON REQUEST



Basic kayaking experience is of advantage, but it is not a requirement. Physical fitness is essential. Kayaking is subject to weather and prevailing ice conditions.

CABINS & PRICES

Quadruple Porthole



2 portholes
 2 upper & lower berths
 Small sofa
 Private shower & toilet
 Flatscreen TV
 Desk & chair
 Telephone and WiFi (supplemented)
 Hair dryer
 Cabinet
 Wardrobe
 This cabin is suitable for families traveling with children, or passengers who do not require a twin or more luxurious cabin



Complete cabin
 Price for the complete cabin, fully occupied.

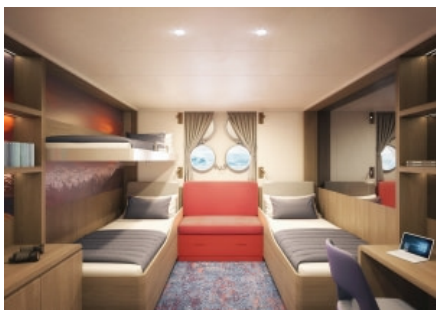
32200 USD



Sharing berth
 Share your cabin with others for the best price

8050 USD

Triple Porthole



2 portholes
 1 upper berth & 2 lower berths
 Small sofa
 Private shower & toilet
 Flatscreen TV
 Desk & chair
 Telephone and WiFi (supplemented)
 Hair dryer
 Cabinet
 Wardrobe
 This cabin is suitable for families traveling with children, or passengers who do not require a twin or more luxurious cabin



Complete cabin
 Price for the complete cabin, fully occupied.

27300 USD



Sharing berth
 Share your cabin with others for the best price

9100 USD

Twin Porthole



2 portholes
 2 single beds
 Small sofa
 Private shower & toilet
 Flatscreen TV
 Desk & chair
 Telephone and WiFi (supplemented)
 Hair dryer
 Cabinet
 Wardrobe



Complete cabin
 Price for the complete cabin, fully occupied.

19900 USD



Single cabin
 Price for the complete cabin occupied by 1 person (1.7x the shared rate).

16915 USD



Sharing berth
 Share your cabin with others for the best price

9950 USD

Twin Window



1 window
 2 single beds
 Small sofa
 Private shower & toilet
 Flatscreen TV
 Desk & chair
 Telephone and WiFi (supplemented)
 Hair dryer
 Cabinet
 Wardrobe
 Please be aware that the view from some windows might be partially obstructed due to the design requirements of the ship



Complete cabin
 Price for the complete cabin, fully occupied. 20800 USD

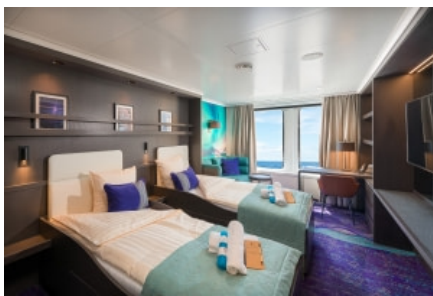


Single cabin
 Price for the complete cabin occupied by 1 person (1.7x the shared rate). 17680 USD



Sharing berth
 Share your cabin with others for the best price 10400 USD

Twin Deluxe



2 windows
 2 single beds
 Sofa
 Private shower & toilet
 Flatscreen TV
 Desk & chair
 Telephone and WiFi (supplemented)
 Refrigerator
 Coffee & tea maker
 Bathrobe
 Hair dryer
 Cabinet
 Wardrobe



Complete cabin
 Price for the complete cabin, fully occupied. 22000 USD



Single cabin
 Price for the complete cabin occupied by 1 person (1.7x the shared rate). 18700 USD



Sharing berth
 Share your cabin with others for the best price 11000 USD

Superior



2 windows
 1 double bed
 Sofa
 Private shower & toilet
 Flatscreen TV
 Desk & chair
 Telephone and WiFi (supplemented)
 Refrigerator
 Coffee & tea maker
 Bathrobe
 Hair dryer
 Cabinet
 Wardrobe



Complete cabin
 Price for the complete cabin, fully occupied. 23800 USD



Single cabin
 Price for the complete cabin occupied by 1 person (1.7x the shared rate). 20230 USD

Junior Suite



1 double window
1 double bed
Private shower & toilet
Flatscreen TV
Desk & chair
Telephone and WiFi (supplemented)
Refrigerator
Coffee & tea maker
Bathrobe
Hair dryer
Cabinet
Wardrobe



Complete cabin
Price for the complete cabin, fully occupied.

25200 USD



Single cabin
Price for the complete cabin occupied by 1 person (1.7x the shared rate).

21420 USD

Grand Suite with private balcony



1 double window
1 double bed
Sofa
Private balcony
Private shower & toilet
Flatscreen TV
Desk & chair
Telephone and WiFi (supplemented)
Refrigerator
Coffee & tea maker
Bathrobe
Hair dryer
Cabinet
Wardrobe



Complete cabin
Price for the complete cabin, fully occupied.

28900 USD



Single cabin
Price for the complete cabin occupied by 1 person (1.7x the shared rate).

24565 USD