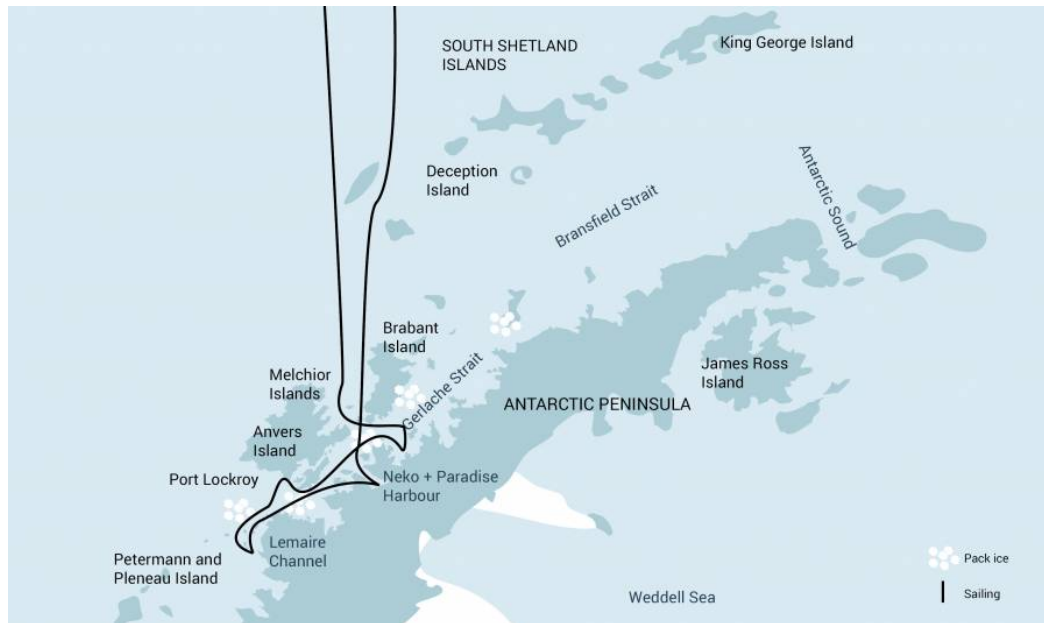


Antarctica - Discovery and learning voyage

The 'Classic Antarctic' route



Title:	Antarctica - Discovery and learning voyage
Dates:	7 Jan - 16 Jan, 2021
Tripcode:	HDS27-21
Duration:	9 nights
Ship:	m/v Hondius
Embarkation:	Ushuaia
Disembarkation:	Ushuaia
Language:	English speaking voyage
Important:	Camping and kayaking are optional activities
More about:	Antarctica cruises Antarctic Peninsula cruises

ITINERARY

PLEASE NOTE: All itineraries are for guidance only. Programs may vary depending on local ice and weather conditions and in order to take advantage of opportunities to see wildlife. The on-board expedition leader determines the final itinerary. Itineraries may mention places that require permission to land, which must be granted by the relevant national authorities. Such permission is not granted prior to the publishing of these itineraries. Flexibility is paramount for expedition cruises. Average cruising speed of m/v Hondius is 10,5 knots.

Day 1: End of the world, start of a journey

Your voyage begins where the world drops off. Ushuaia, Argentina, reputed to be the

Included in this voyage

Voyage aboard the indicated vessel as indicated in the itinerary

All meals throughout the voyage aboard the ship including snacks, coffee and tea.

All shore excursions and activities throughout the voyage by Zodiac.

Program of lectures by noted naturalists and leadership by experienced expedition staff.

southernmost city on the planet, is located on the far southern tip of South America. Starting in the afternoon, you embark from this small resort town on Tierra del Fuego, nicknamed “The End of the World,” and sail the mountain-fringed Beagle Channel for the remainder of the evening.

Day 2 – 3: Path of the polar explorers

Over the next two days on the Drake Passage, you enjoy some of the same experiences encountered by the great polar explorers who first charted these regions: cool salt breezes, rolling seas, maybe even a fin whale spouting up sea spray. After passing the Antarctic Convergence – Antarctica’s natural boundary, formed when north-flowing cold waters collide with warmer sub-Antarctic seas – you are in the circum-Antarctic upwelling zone. Not only does the marine life change, the avian life changes too. Wandering albatrosses, grey-headed albatrosses, black-browed albatrosses, light-mantled sooty albatrosses, cape pigeons, southern fulmars, Wilson’s storm petrels, blue petrels, and Antarctic petrels are a few of the birds you might see.

Day 4 – 7: Entering Antarctica

Gray stone peaks sketched with snow, towers of broken blue-white ice, and dramatically different wildlife below and above. You first pass the snow-capped Melchior Islands and Schollaert Channel, sailing between Brabant and Anvers Islands.

Sites you may visit include:

Danco Island – Activities here may focus on the gentoo penguins nesting on the island, in addition to the Weddell and crabeater seals that can be found nearby.

Neko Harbour – An epic landscape of mammoth glaciers and endless wind-carved snow, Neko Harbour offers opportunities for a Zodiac cruise and landing that afford the closest views of the surrounding alpine peaks.

Paradise Bay – You may be able to take a Zodiac cruise in these sprawling, ice-flecked waters, where there’s a good chance you’ll encounter humpback and minke whales.

Free use of rubber boots and snowshoes.

Luggage transfer from pick-up point to the vessel on the day of embarkation, in Ushuaia.

Pre-scheduled group transfer from the vessel to the airport in Ushuaia (directly after disembarkation).

All miscellaneous service taxes and port charges throughout the programme.

Comprehensive pre-departure material.

Excluded from this voyage

Any airfare, whether on scheduled or charter flights

Pre- and post- land arrangements.

Passport and visa expenses.

Government arrival and departure taxes.

Meals ashore.

Baggage, cancellation and personal insurance (which is strongly recommended).

Excess baggage charges and all items of a personal nature such as laundry, bar, beverage charges and telecommunication charges.

The customary gratuity at the end of the voyages for stewards and other service personnel aboard (guidelines will be provided).

Pléneau & Petermann Islands – If the ice allows it, you could sail through the Lemaire Channel in search of Adélie penguins and blue-eyed shags. There is also a possibility you'll encounter humpback and minke whales here, as well as leopard seals.

Port Lockroy – After sailing through the Neumayer Channel, you may get a chance to visit the former British research station – now a museum and post office – of Port Lockroy on Goudier Island. You may also be able to partake in activities around Jouglia Point, meeting gentoo penguins and blue-eyed shags. There are great opportunities also for kayaking and camping here, and when conditions are right, you can even snowshoe around the shore.

Wilhelmina Bay & Guvernøren – This is a great place to spot humpback whales. You also may embark on a Zodiac cruise ending at the ghostly wreck of the Guvernøren, a whaling vessel that caught fire here in 1915. Around the Melchior Islands, amid a frozen landscape peopled with icebergs, you may encounter even more whales, leopard seals, and crabeater seals.

Conditions on the Drake Passage determine the exact time of departure.

Day 8 - 9: Familiar seas, familiar friends

Your return voyage is far from lonely. While crossing the Drake, you're again greeted by the vast array of seabirds remembered from the passage south. But they seem a little more familiar to you now, and you to them.

Day 10: There and back again

Every adventure, no matter how grand, must eventually come to an end. It's now time to disembark in Ushuaia, but with memories that will accompany you wherever your next adventure lies.

M/V HONDIUS

Hondius is the first-registered Polar Class 6 vessel in the world, optimized for the most innovative exploratory voyages throughout the Arctic and Antarctica. [Full ship info >>](#)

CABINS & PRICES

Quadruple Porthole



- 2 portholes
- 2 upper & lower berths
- Small sofa
- Private shower & toilet
- Flatscreen TV
- Desk & chair
- Telephone and WiFi (supplemented)
- Hair dryer
- Cabinet
- Wardrobe

This cabin is suitable for families traveling with children, or passengers who do not require a twin or more luxurious cabin



Complete cabin
Price for the complete cabin, fully occupied. 29200 USD



Sharing berth
Share your cabin with others for the best price 7300 USD

Triple Porthole



- 2 portholes
- 1 upper berth & 2 lower berths
- Small sofa
- Private shower & toilet
- Flatscreen TV
- Desk & chair
- Telephone and WiFi (supplemented)
- Hair dryer
- Cabinet
- Wardrobe

This cabin is suitable for families traveling with children, or passengers who do not require a twin or more luxurious cabin



Complete cabin
Price for the complete cabin, fully occupied. 24750 USD



Sharing berth
Share your cabin with others for the best price 8250 USD

Twin Porthole



2 portholes
2 single beds
Small sofa
Private shower & toilet
Flatscreen TV
Desk & chair
Telephone and WiFi (supplemented)
Hair dryer
Cabinet
Wardrobe



Complete cabin
Price for the complete cabin, fully occupied. 17900 USD



Single cabin
Price for the complete cabin occupied by 1 person (1.7x the shared rate). 15215 USD



Sharing berth
Share your cabin with others for the best price 8950 USD

Twin Window



1 window
2 single beds
Small sofa
Private shower & toilet
Flatscreen TV
Desk & chair
Telephone and WiFi (supplemented)
Hair dryer
Cabinet
Wardrobe



Complete cabin
Price for the complete cabin, fully occupied. 18700 USD



Single cabin
Price for the complete cabin occupied by 1 person (1.7x the shared rate). 15895 USD



Sharing berth
Share your cabin with others for the best price 9350 USD

Twin Deluxe



2 windows
 2 single beds
 Sofa
 Private shower & toilet
 Flatscreen TV
 Desk & chair
 Telephone and WiFi (supplemented)
 Refrigerator
 Coffee & tea maker
 Bathrobe
 Hair dryer
 Cabinet
 Wardrobe



Complete cabin
 Price for the complete cabin, fully occupied. **19800 USD**



Single cabin
 Price for the complete cabin occupied by 1 person (1.7x the shared rate). **16830 USD**



Sharing berth
 Share your cabin with others for the best price **9900 USD**

Superior



2 windows
 1 double bed
 Sofa
 Private shower & toilet
 Flatscreen TV
 Desk & chair
 Telephone and WiFi (supplemented)
 Refrigerator
 Coffee & tea maker
 Bathrobe
 Hair dryer
 Cabinet
 Wardrobe



Complete cabin
 Price for the complete cabin, fully occupied. **21200 USD**



Single cabin
 Price for the complete cabin occupied by 1 person (1.7x the shared rate). **18020 USD**

Junior Suite



- 1 double window
- 1 double bed
- Private shower & toilet
- Flatscreen TV
- Desk & chair
- Telephone and WiFi (supplemented)
- Refrigerator
- Coffee & tea maker
- Bathrobe
- Hair dryer
- Cabinet
- Wardrobe



Complete cabin
Price for the complete cabin, fully occupied.

22900 USD



Single cabin
Price for the complete cabin occupied by 1 person (1.7x the shared rate).

19465 USD

Hondius Suite



- 4 windows
- 1 double bed
- Private shower & toilet
- Desk & chair
- Flatscreen TV
- Telephone and WiFi (supplemented)
- Refrigerator
- Coffee & tea maker
- Bathrobe
- Hair dryer
- Cabinet
- Walk-in closet



Complete cabin
Price for the complete cabin, fully occupied.

29900 USD



Single cabin
Price for the complete cabin occupied by 1 person (1.7x the shared rate).

25415 USD

Grand Suite with private balcony



- 1 double window
- 1 double bed
- Sofa
- Private balcony
- Private shower & toilet
- Flatscreen TV
- Desk & chair
- Telephone and WiFi (supplemented)
- Refrigerator
- Coffee & tea maker
- Bathrobe
- Hair dryer
- Cabinet
- Wardrobe



Complete cabin

Price for the complete cabin, fully occupied.

25900 USD



Single cabin

Price for the complete cabin occupied by 1 person (1.7x the shared rate).

22015 USD