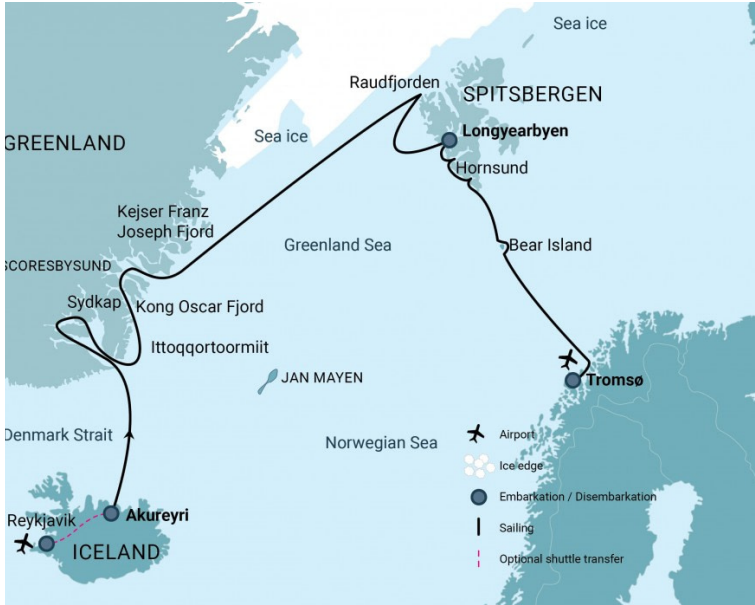


19 Days Ultimate Arctic Discovery Voyage , Iceland – Northeast Greenland – Spitsbergen – Bear Island – Norway

Get the ultimate Arctic experience with this epic combination of two voyages that explore the most scenic and animal-rich areas of Svalbard and northeast Greenland

This is a combination cruise consisting of a few smaller cruises.



Title: 19 Days Ultimate Arctic Discovery Voyage , Iceland – Northeast Greenland – Spitsbergen – Bear Island – Norway

Dates: 20 Aug - 7 Sep, 2023

Tripcode: OTL08c23

Duration: 18 nights

Ship: m/v Ortelius

Embarkation: Akureyri

Disembarkation: Tromsø

Language: English speaking voyage

Trips included in the combination

Cabin/berths choice is subject to availability. We can't guarantee the exact same cabin placement on each cruise.



OTL08x23 Iceland - Northeast Greenland – Spitsbergen

Enjoy some of the Arctic's most iconic sites and wildlife on a voyage spanning Spitsbergen and northeast Greenland, featuring such highlights as Earth's largest fjord and one of the best spots for viewing polar bears

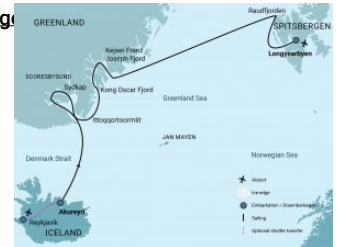
The Northeast Greenland to Spitsbergen cruise visits a number of areas as rich with wildlife as with fantastic polar scenery. During this fantastic expedition, you may encounter whales, seals, polar bears, and numerous species of seabird, with potential sightings of the mesmerizing aurora borealis.

Dates: 20 Aug - 2 Sep, 2023

Ship: [m/v Ortelius](#)

Embarkation – Disembarkation: Akureyri – Longyearbyen

Duration: 13 nights





OTL09x23 South Spitsbergen - Bear Island

Exploring key areas of southern Svalbard as well as the seldom-visited Bear Island, this adventurous expedition gives you the chance to enjoy exotic wildlife sightings and glimpses of Arctic history

The South of Spitsbergen and Bear Island cruise sails waters filled with breathtaking scenery. The expedition passes through areas that are home to seals, seabirds, whales, and polar bears.

Dates: 2 Sep - 7 Sep, 2023
Ship: [m/v Ortelius](#)
Embarkation – Longyearbyen – Tromsø
Disembarkation:
Duration: 5 nights



ITINERARY

Get the ultimate Arctic experience with this epic combination of two voyages that explore the most scenic and animal-rich areas of Svalbard and northeast Greenland

Day 1: On the Iceland roadOn the Iceland roadOn the Iceland roadOn the Iceland road

OTL08x23

Your journey begins in the morning, where by request you can transfer via chartered bus (T) from the city hall of Reykjavik (the meeting point) to the ship in Akureyri (the embarkation point). You arrive in the afternoon after a six-hour drive through northern Iceland.

PLEASE NOTE: This transfer (T) must be booked and paid for in advance. In the early evening, the ship departs from the port of Akureyri, sailing north toward the Denmark Strait.

Day 2: Sailing to East GreenlandSailing to East GreenlandSailing to East GreenlandSailing to East Greenland

OTL08x23

While sailing north, you're likely to see fulmars, kittiwakes, gannets, and common guillemots. We will then cross the Arctic Circle, possibly spotting whales. By evening the first icebergs flash into sight with our approach to the east Greenland coast, near Brewster, and at night you might enjoy views of the enchanting aurora borealis.

Day 3: Into Scoresby SundInto Scoresby SundInto Scoresby SundInto Scoresby Sund

OTL08x23

Today we reach Scoresby Sund, Earth's largest fjord system, sailing along the glaciated Volquart Boons Kyst. You may also enjoy a Zodiac cruise past one of the glacier fronts, along with a visit to the basalt columns and ice formations of Vikingebugt. The afternoon goal is to visit Danmark Island, where we find the remains of an Inuit settlement abandoned around 200 years ago.

The circular stone tent rings indicate the summer houses, while the winter houses can be seen closer to a small cape. The sites are well preserved, with easy identifiable entrances, bear-proof meat caches, and grave sites. In the evening, we continue sailing the berg-crowded fjords to the west.

Day 4: Colors of the capeColors of the capeColors of the capeColors of the cape

OTL08x23

The goal is a Zodiac cruise near Røde Ø, one of the world's most cherished iceberg attractions. The austere blue-white of the icebergs sets sharp against the brooding red backdrop of the sediment slopes. The afternoon plan is to sail through the northern parts of Røde Fjord, with the chance to see musk oxen and warm autumnal foliage.

Day 5: Enormous bergs, Arctic haresEnormous bergs, Arctic haresEnormous bergs, Arctic haresEnormous bergs, Arctic hares

OTL08x23

In the morning, we encounter colossal icebergs, some of which are over 100 meters (328 feet) high and more than a kilometer (.62 mile) long. Most of them are grounded, as the fjord is only about 400 meters deep (1,312 feet). We will then land near Sydkap, with fine views of Hall Bredning and a good shot of seeing Arctic hares.

Day 6: Jameson Land and IttoqqortoormiitJameson Land and IttoqqortoormiitJameson Land and IttoqqortoormiitJameson Land and Ittoqqortoormiit

OTL08x23

For the first half of the day, we will have an easy landing and excursion at a lagoon 4 km (2.5 miles) west of Kapp Stewart, a place where migrating geese and waders collect for their autumn migration. The low and gently undulating tundra is ideal for some easy walks, and hopefully we will continue to see other local wildlife. In the afternoon, we visit the settlement of Ittoqqortoormiit.

Day 7: Sights of the Arctic autumnSights of the Arctic autumnSights of the Arctic autumnSights of the Arctic autumn

OTL08x23

In the morning, we pass through the strait between North Liverpool Land and the island of Uunartoq Qogertaq. Last century it was connected by a glacier with the mainland, but in 2005 an OEX expedition discovered that the glacier had disappeared and that you can now sail through the strait. In the afternoon, we land at Antarctic Havn, an extensive valley where you can spot groups of musk oxen. At this time of year, the sparse vegetation is dressed in the fiery colors of autumn.

Day 8: Alpefjord's lofty peaksAlpefjord's lofty peaksAlpefjord's lofty peaksAlpefjord's lofty peaks

OTL08x23

We enter Segelsällskapets Fjord in the morning, seeing the streaked slopes of the Berzelius Mountains bordering the north side. Our landing will be on the south shore, where you can see ancient sedimentary formations lying right at your feet. A hike takes us near a small lake with good chances to see musk oxen, Arctic hares, and ptarmigans. In the afternoon, the ship ventures into Alpefjord, aptly named for the spire-like peaks that thrust up around it. You may then embark on a Zodiac cruise around Gully Glacier, which once blocked access to the interior of these waters. Continuing deep into the fjord, we experience a definitive Greenland adventure.

Day 9: Islands of Antarctic SoundIslands of Antarctic SoundIslands of Antarctic SoundIslands of Antarctic Sound

OTL08x23

Our morning plan is to head into Antarctic Sound, where we find the islands of Ruth, Maria, and Ella. Maria is the most likely spot for a landing. We arrive at Teufelschloss (Devil's Castle), a mountain with layered geology. On the other side of the fjord is Blomsterbugt and the intended landing site.

Day 10: Tundra, mountains, and icebergsTundra, mountains, and icebergsTundra, mountains, and icebergsTundra, mountains, and icebergs

OTL08x23

Today we sail through Kaiser Franz Josef Fjord, surrounded by towering mountains and bright interior icebergs. In the morning, we land in Margrethe Dal near Thule/Dorset remains, and later we will sail into Foster Bay at Myggebugten. Beyond the old hunters' hut where Norwegian trappers hunted for polar bear and Arctic fox in the first half of the 20th century, there is a sprawling tundra populated by musk oxen, with geese floating the small lakes. In the afternoon, we sail northward along the Greenland coast and will probably have our last sights of Greenland when we sail by Shannon Island.

Day 11-12: Along the sea ice to SpitsbergenAlong the sea ice to SpitsbergenAlong the sea ice to SpitsbergenAlong the sea ice to Spitsbergen

OTL08x23

We sail northeast along the outer fringes of the southward moving Greenland sea ice, with its seabirds, whales, seals, and maybe a polar bear sighting. Our aim is Spitsbergen.

Day 13: Raudfjorden glaciersRaudfjorden glaciersRaudfjorden glaciersRaudfjorden glaciers

OTL08x23

We sail northeast along the outer fringes of the southward moving Greenland sea ice, with its seabirds, whales, seals, and maybe a polar bear sighting. Our aim is Spitsbergen.

Day 14: Journey's end in LongyearbyenJourney's end in LongyearbyenJourney's end in LongyearbyenJourney's end in Longyearbyen

OTL08x23

You disembark in Longyearbyen at 09:00 AM at the latest. From here you can take a shuttle to the airport, departing for home or wherever your next adventure lies.

Day 1: Largest town, biggest islandLargest town, biggest islandLargest town, biggest islandLargest town, biggest island

OTL09x23

You touch down in Longyearbyen, the administrative center of Spitsbergen, the largest island of the Svalbard archipelago. Enjoy strolling around this former mining town, whose parish church and Svalbard Museum make for fascinating attractions. Though the countryside appears stark, more than a hundred species of plant have been recorded in it. In the early evening the ship sails out of Isfjorden, where you might spot the first minke whale of your voyage.

Day 2: Bell Sund's flora, fauna, and haunting historyBell Sund's flora, fauna, and haunting historyBell Sund's flora, fauna, and haunting history

OTL09x23

Bell Sund is one of the largest fjord systems in Svalbard. The ocean currents make this area slightly warmer than other areas in the archipelago, which shows in the relatively lush vegetation. Here there are excellent opportunities to enjoy both history and wildlife.

One possibility is Ahlstrandhalvøya, at the mouth of Van Keulenfjorden, where piles of beluga skeletons can be found. These remains of 19th-century whale slaughter are a haunting reminder of the consequences of rampant exploitation. Fortunately, belugas were not hunted into extinction, and you may still see them in the area.

In Recherchefjord at Lagerneset, the Dutch had a 17th-century whaling station, and in the Recherche lagoon we see often ringed seals. Alternatively, we may land at Millarodden at the north side of Bell Sund, where we may see walrus hauling out.

Though the bird mountains of Ingeborgfjellet are deserted in September, a landing on the northern shore of Bell Sund makes for a good walk among whale bones, while the southern shore has fantastic geological formations.

Day 3: Spectacular HornsundSpectacular HornsundSpectacular HornsundSpectacular Hornsund

OTL09x23

We start the day by quietly cruising Brepollen in the spectacular Hornsund area of southern Spitsbergen, enjoying the scenery of glacier fronts and towering mountain peaks. The mountain of Hornsundtind rises to 1,431 meters (4,695 feet), while the peak of Bautaen testifies to why early Dutch explorers gave this island the name Spitsbergen, meaning "pointed mountains."

There are 14 magnificent glaciers in the area, and we have a fair chance of encountering seals and polar bears. In late afternoon, we will try to reach Palfylodden, a walrus haul-out site at the southern entrance of the fjord.

Day 4: Rarely visited Bear IslandRarely visited Bear IslandRarely visited Bear IslandRarely visited Bear Island

OTL09x23

Depending on the prevailing winds, we will sail in the morning along the east coast of Bear Island by Myserifjellet. We also plan to land in Kvalrossbukta, where we will see the remains of a whaling station from early in the previous century.

Afterward we may land in the shallow valley of Rendalen, where we still might see great skuas with their fledging young. Just south of this is the rock formation Perleporten, where in very calm weather you can sail through by Zodiac. The high seabird cliffs are deserted by this time.

Day 5: Southward across the Barents SeaSouthward across the Barents SeaSouthward across the Barents Sea

OTL09x23

Next we will spend a whole day sailing south on the Barents Sea en route to Norway, possibly encountering different species of whales in the mixing zones of the Gulf Stream and Barents currents. Later in the night, we may have the first chance to see the aurora borealis while the skies get darker.

Day 6: Journey's end in Tromsø

OTL09x23

You disembark in Tromsø at 09:00 AM at the latest. From here you can take a shuttle to the airport, departing for home or wherever your next adventure lies.

ACTIVITIES YOU CAN PARTICIPATE IN

Choose a cruise

OTL08x23



OTL08x23 Swarovski Binoculars

FREE

Terms of this limited-time offer

- For new bookings on select cruises only
- Cannot be combined with other offers, past or future
- Guests receive voucher at booking to use for collecting binoculars on board
- One pair of binoculars per newly booked guest
- Each guest free to choose between the option of a cash discount or binoculars
- Offer continues only while supply lasts

CABINS & PRICES

Prices are displayed with discounts applied if you book berths or cabins on both cruises.

OTL08x23



OTL08x23 Quadruple Porthole

- 2 portholes
- 2 upper / lower berths
- Private shower & toilet
- Desk & chair
- Flatscreen TV
- Telephone & WiFi (supplemented)
- Hair dryer
- Safe deposit box
- Ample storage space



Complete cabin

Price for the complete cabin, fully occupied.

22400 USD

~~28000 USD~~



Sharing berth

Share your cabin with others for the best price

5600 USD

~~7000 USD~~



OTL08x23 Twin Porthole

- 2 portholes
- 2 lower berths
- Private shower & toilet
- Desk & chair
- Flatscreen TV
- Telephone & WiFi (supplemented)
- Hair dryer
- Safe deposit box
- Ample storage space



Complete cabin

Price for the complete cabin, fully occupied.

15680 USD

~~19600 USD~~



Single cabin

Price for the complete cabin occupied by 1 person (1.7x the shared rate).

13328 USD

~~16660 USD~~

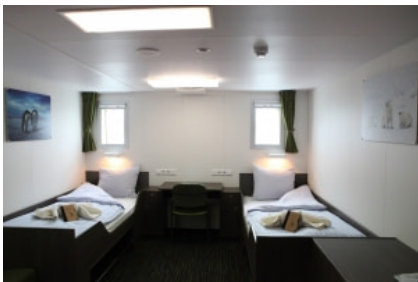


Sharing berth

Share your cabin with others for the best price

7840 USD

~~9800 USD~~



OTL08x23 Twin Window

- 2 windows
- 2 lower berths
- Private shower & toilet
- Desk & chair
- Flatscreen TV
- Telephone & WiFi (supplemented)
- Hair dryer
- Safe deposit box
- Ample storage space



Complete cabin

Price for the complete cabin, fully occupied.

17280 USD

~~21600 USD~~



Single cabin

Price for the complete cabin occupied by 1 person (1.7x the shared rate).

14688 USD

~~18360 USD~~



Sharing berth

Share your cabin with others for the best price

8640 USD

~~10800 USD~~



OTL08x23 Twin Deluxe

- 3 windows
- 2 lower berths
- Private shower & toilet
- Desk & chair
- Small sofa
- Refrigerator
- Coffee & tea maker
- Flatscreen TV
- Telephone & WiFi (supplemented)
- Hair dryer
- Safe deposit box
- Ample storage space



Complete cabin

Price for the complete cabin, fully occupied.

18240 USD

~~22800 USD~~



Single cabin

Price for the complete cabin occupied by 1 person (1.7x the shared rate).

15504 USD

~~19380 USD~~



Sharing berth

Share your cabin with others for the best price

9120 USD

~~11400 USD~~



OTL08x23 Superior

- 2 windows (minimum)
- 1 double bed
- 1 single (sofa) bed
- Private shower & toilet
- Desk & chair
- Flatscreen TV
- Telephone & WiFi (supplemented)
- Refrigerator
- Coffee & tea maker
- Hair dryer
- Safe deposit box
- Ample storage space



Complete cabin

Price for the complete cabin, fully occupied.

20320 USD

~~25400 USD~~



Single cabin

Price for the complete cabin occupied by 1 person (1.7x the shared rate).

17272 USD

~~21590 USD~~

OTL09x23



OTL09x23 Quadruple Porthole

- 2 portholes
- 2 upper / lower berths
- Private shower & toilet
- Desk & chair
- Flatscreen TV
- Telephone & WiFi (supplemented)
- Hair dryer
- Safe deposit box
- Ample storage space



Complete cabin

Price for the complete cabin, fully occupied.

8640 USD

~~10800 USD~~



Sharing berth

Share your cabin with others for the best price

2160 USD

~~2700 USD~~



OTL09x23 Twin Porthole

- 2 portholes
- 2 lower berths
- Private shower & toilet
- Desk & chair
- Flatscreen TV
- Telephone & WiFi (supplemented)
- Hair dryer
- Safe deposit box
- Ample storage space



Complete cabin

Price for the complete cabin, fully occupied.

6000 USD

~~7500 USD~~



Single cabin

Price for the complete cabin occupied by 1 person (1.7x the shared rate).

5100 USD

~~6375 USD~~

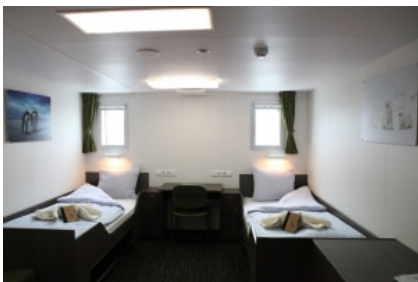


Sharing berth

Share your cabin with others for the best price

3000 USD

~~3750 USD~~



OTL09x23 Twin Window

- 2 windows
- 2 lower berths
- Private shower & toilet
- Desk & chair
- Flatscreen TV
- Telephone & WiFi (supplemented)
- Hair dryer
- Safe deposit box
- Ample storage space



Complete cabin

Price for the complete cabin, fully occupied.

6640 USD

~~8300 USD~~



Single cabin

Price for the complete cabin occupied by 1 person (1.7x the shared rate).

5644 USD

~~7055 USD~~



Sharing berth

Share your cabin with others for the best price

3320 USD

~~4150 USD~~



OTL09x23

Twin Deluxe

- 3 windows
- 2 lower berths
- Private shower & toilet
- Desk & chair
- Small sofa
- Refrigerator
- Coffee & tea maker
- Flatscreen TV
- Telephone & WiFi (supplemented)
- Hair dryer
- Safe deposit box
- Ample storage space



Complete cabin

Price for the complete cabin, fully occupied.

7040 USD

~~8800 USD~~



Single cabin

Price for the complete cabin occupied by 1 person (1.7x the shared rate).

5984 USD

~~7480 USD~~



Sharing berth

Share your cabin with others for the best price

3520 USD

~~4400 USD~~



OTL09x23

Superior

- 2 windows (minimum)
- 1 double bed
- 1 single (sofa) bed
- Private shower & toilet
- Desk & chair
- Flatscreen TV
- Telephone & WiFi (supplemented)
- Refrigerator
- Coffee & tea maker
- Hair dryer
- Safe deposit box
- Ample storage space



Complete cabin

Price for the complete cabin, fully occupied.

7840 USD

~~9800 USD~~



Single cabin

Price for the complete cabin occupied by 1 person (1.7x the shared rate).

6664 USD

~~8330 USD~~