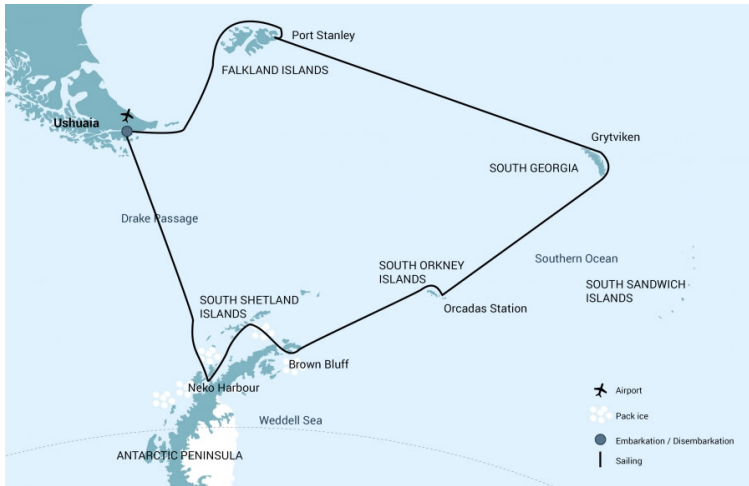


Falkland Islands - South Georgia - Antarctica

Meet at least six penguin species



Title:	Falkland Islands - South Georgia - Antarctica
Dates:	15 Jan - 3 Feb, 2022
Tripcode:	PLA27-22
Duration:	19 nights
Ship:	m/v Plancius
Embarkation:	Ushuaia
Disembarkation:	Ushuaia
Language:	English speaking voyage

ITINERARY

PLEASE NOTE: All itineraries are for guidance only. Programs may vary depending on local ice and weather conditions and in order to take advantage of opportunities to see wildlife. The on-board expedition leader determines the final itinerary. Itineraries may mention places that require permission to land, which must be granted by the relevant national authorities. Such permission is not granted prior to the publishing of these itineraries. Flexibility is paramount for expedition cruises. Average cruising speed of m/v Plancius is 10,5 knots.

This Falkland Islands, South Georgia, and Antarctic Peninsula cruise is an animal-lover's dream come true. The expedition explores one of the last untamed areas on Earth – a land of ruggedly beautiful landscapes and amazingly varied wildlife.

Day 1: End of the world, start of a journey

Your voyage begins where the world drops off. Ushuaia, Argentina, reputed to be the southernmost city on the planet, is located on the far southern tip of South America. Starting in the afternoon, you embark from this small resort town on Tierra del Fuego, nicknamed "The End of the World," and sail the mountain-fringed Beagle Channel for the remainder of the evening.

Day 2: The winged life of the westerlies

Several species of albatross follow the vessel into the westerlies, along with storm petrels, shearwaters, and diving petrels.

Day 3: Finding the Falklands

The Falkland Islands offer an abundance of wildlife that is easily approachable, though caution is always advised. These islands are largely unknown gems, the site of a 1982 war between the UK and Argentina. Not only do various species of bird live here, but chances are great you'll see both Peale's dolphins and Commerson's dolphins in the surrounding waters.

During this segment of the voyage, you may visit the following sites:

Carcass Island – Despite its name, this island is pleasantly rodent-free and hence bounteous with birdlife and many endemic species. Anything from breeding Magellanic penguins and gentoos to numerous waders and passerine birds (including Cobb's wrens and tussock-birds) live here.

Saunders Island – On Saunders Island you can see the black-browed albatross and its sometimes-clumsy landings, along with breeding imperial shags and rockhopper penguins. King penguins, Magellanic penguins, and gentoos are also found here.

Day 4: The seat of Falklands culture

The capital of the Falklands and center of its culture, Port Stanley has some Victorian-era charm: colorful houses, well-tended gardens, and English-style pubs are all to be found here. You can also see several century-old clipper ships nearby, silent witnesses to the hardships of 19th century sailors. The small but interesting museum is also worth a visit, covering the early days of settlement up to the Falklands War. Approximately 2,100 people live in Port Stanley. Admission to the museum is included.

Day 5 - 6: Once more to the sea

En route to South Georgia, you now cross the Antarctic Convergence. The temperature cools considerably within the space of a

few hours, and nutritious water rises to the surface of the sea due to colliding water columns. This phenomenon attracts a multitude of seabirds near the ship, including several species of albatross, shearwaters, petrels, prions, and skuas.

Day 7 - 10: South Georgia Journey

Today you arrive at the first South Georgia activity site. Please keep in mind that weather conditions in this area can be challenging, largely dictating the program.

Over the next several days, you have a chance to visit the following sites:

Prion Island – This location is closed during the early part of the wandering albatross breeding season (November 20 – January 7). From January on, the breeding adults have found their partners and are sitting on eggs or nursing their chicks. Enjoy witnessing the gentle nature of these animals, which possess the largest wingspan of any bird in the world.

Fortuna Bay – A beautiful outwash plain from Fortuna Glacier is home to a large number of king penguins and seals. Here you may also have the chance to follow the final leg of Shackleton's route to the abandoned whaling village of Stromness. This path cuts across the mountain pass beyond Shackleton's Waterfall, and as the terrain is partly swampy, be prepared to cross a few small streams.

Salisbury Plain, St. Andrews Bay, Gold Harbour – These sites not only house the three largest king penguin colonies in South Georgia, they're also three of the world's largest breeding beaches for Antarctic fur seals. Literally millions breed on South Georgia during December and January. Only during the mid-season do they peak in their breeding cycle. There will be some young adult Elephant seals as well as this seasons 'Weaner's; the young Elephant Seals that have been left to fend for themselves. Watch your step and stay cool when walking the beaches during this time.

Grytviken – In this abandoned whaling station, king penguins walk the streets and elephant seals lie around like they own the place – because they basically do. Here you might be able to see the South Georgia Museum as well as Shackleton's grave.

In the afternoon of day 10 and depending on the conditions, we will start sailing southwards in the direction of the South Orkney Islands.

Day 11: Southward bound

There may be sea ice on this route, and at the edge of the ice some south polar skuas and snow petrels could join the other seabirds trailing the vessel south.

Day 12: The scenic vistas of South Orkney

Depending on the conditions, you might visit Orcadas Base, an Argentine scientific station on Laurie Island in the South Orkney archipelago. The personnel here will happily show you their facility, where you can enjoy expansive views of the surrounding glaciers. If a visit isn't possible, you may instead land in Coronation Island's Shingle Cove.

Day 13: Last push to the Antarctic

Enormous icebergs and a fair chance of fin whale sightings ensure there's never a dull moment on this last sea voyage south. Also, your best chance to spot Antarctic petrels is here.

Day 14 - 17: Awe-inspiring Antarctica

If the ice conditions permit, you now sail into the Weddell Sea. Here colossal tabular icebergs herald your arrival to the eastern side of the Antarctic Peninsula. Paulet Island, with its large population of Adélie penguins, is a possible stop. You might also visit Brown Bluff, located in the ice-clogged Antarctic Sound, where you could get the chance to set foot on the Antarctic Continent itself.

If conditions aren't favorable to enter the Weddell Sea from the east, the ship will set course for Elephant Island and head into the Bransfield Strait, between the South Shetland Islands and the Antarctic Peninsula. Here you can attempt to access the Antarctic Sound from the northwest.

The breathtaking scenery continues in the Bransfield Strait and, if conditions allow further South in the Gerlache Strait. Conditions on the Drake Passage determine the exact time of departure.

Day 18 - 19: Familiar seas, familiar friends

Your return voyage is far from lonely. While crossing the Drake, you're again greeted by the vast array of seabirds remembered from the passage south. But they seem a little more familiar to you now, and you to them.

Day 20: There and back again

Every adventure, no matter how grand, must eventually come to an end. It's now time to disembark in Ushuaia, but with

memories that will accompany you wherever your next adventure lies.

Included in this voyage

- *Voyage aboard the indicated vessel as indicated in the itinerary*
- *All meals throughout the voyage aboard the ship including snacks, coffee and tea.*
- *All shore excursions and activities throughout the voyage by Zodiac.*
- *Program of lectures by noted naturalists and leadership by experienced expedition staff.*
- *Free use of rubber boots and snowshoes.*
- *Luggage transfer from pick-up point to the vessel on the day of embarkation, in Ushuaia.*
- *Pre-scheduled group transfer from the vessel to the airport in Ushuaia (directly after disembarkation).*
- *All miscellaneous service taxes and port charges throughout the programme.*
- *Comprehensive pre-departure material.*

Excluded from this voyage

Any airfare, whether on scheduled or charter flights.

Pre- and post- land arrangements.

Passport and visa expenses.

Government arrival and departure taxes.

Meals ashore.

Baggage, cancellation and personal insurance (which is strongly recommended).

Excess baggage charges and all items of a personal nature such as laundry, bar, beverage charges and telecommunication charges.

The customary gratuity at the end of the voyages for stewards and other service personnel aboard (guidelines will be provided).

CABINS & PRICES

Quadruple Porthole



1 porthole
 2 upper & lower berths
 Private shower & toilet
 Desk & chair
 Flatscreen TV
 Telephone & WiFi (supplemented)
 Hair dryer
 Ample storage space
 This cabin is suitable for families traveling with children, or passengers who do not require a twin or more luxurious cabin



Complete cabin
 Price for the complete cabin, fully occupied.

62000 USD



Sharing berth
 Share your cabin with others for the best price

15500 USD

Triple Porthole



1 porthole
 1 upper berth & 2 lower berths
 Private shower & toilet
 Desk & chair
 Flatscreen TV
 Telephone & WiFi (supplemented)
 Hair dryer
 Ample storage space
 This cabin is suitable for families traveling with children, or passengers who do not require a twin or more luxurious cabin



Complete cabin
 Price for the complete cabin, fully occupied.

56100 USD



Sharing berth
 Share your cabin with others for the best price

18700 USD

Twin Porthole



1 porthole
 2 lower berths
 Private shower & toilet
 Desk & chair
 Flatscreen TV
 Telephone & WiFi (supplemented)
 Hair dryer
 Ample storage space



Complete cabin
 Price for the complete cabin, fully occupied.

37400 USD



Single cabin
 Price for the complete cabin occupied by 1 person (1.7x the shared rate).

31790 USD



Sharing berth
 Share your cabin with others for the best price

18700 USD

Twin Window



1 window
2 lower berths
Private shower & toilet
Desk & chair
Flatscreen TV
Telephone & WiFi (supplemented)
Hair dryer
Ample storage space



Complete cabin
Price for the complete cabin, fully occupied. 39000 USD



Single cabin
Price for the complete cabin occupied by 1 person (1.7x the shared rate). 33150 USD



Sharing berth
Share your cabin with others for the best price 19500 USD

Twin Deluxe



2 windows
2 lower berths
Private shower & toilet
Desk & chair
Flatscreen TV
Telephone & WiFi (supplemented)
Hair dryer
Ample storage space
These cabins are corner cabins and are slightly more spacious than the normal twin porthole/window cabins



Complete cabin
Price for the complete cabin, fully occupied. 41600 USD

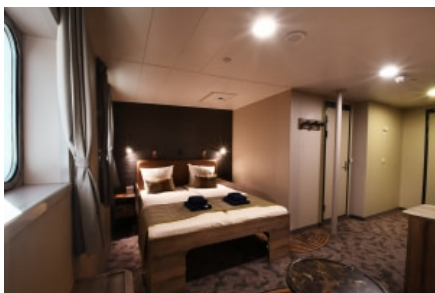


Single cabin
Price for the complete cabin occupied by 1 person (1.7x the shared rate). 35360 USD



Sharing berth
Share your cabin with others for the best price 20800 USD

Superior



2 windows
1 double bed
1 sofa bed
Private shower & toilet
Desk & chair
Flatscreen TV
Telephone & WiFi (supplemented)
Refrigerator
Coffee & tea maker
Hair dryer
Ample storage space



Complete cabin
Price for the complete cabin, fully occupied. 44800 USD



Single cabin
Price for the complete cabin occupied by 1 person (1.7x the shared rate). 38080 USD