



Itinerary

DAY 1 | ARRIVE IN CALGARY, CANADA

Your Arctic expedition begins in Calgary. Explore this vibrant city on your own before spending the night enjoying the comfort and amenities of your designated hotel.

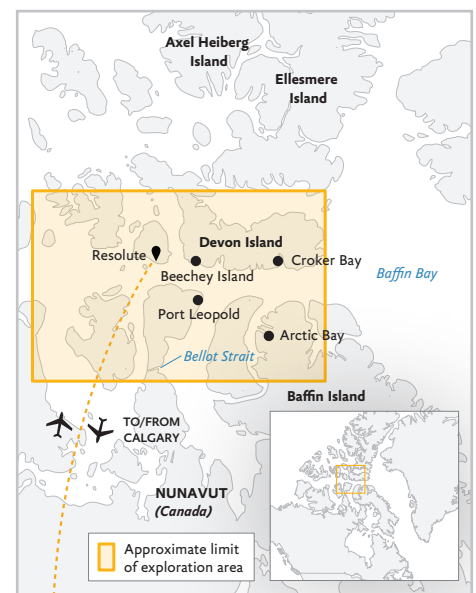
DAY 2 | FLY TO RESOLUTE & EMBARK

This morning, board your charter flight to Resolute, Nunavut. Upon arrival, you will be transferred to your ship via Zodiac or helicopter (depending on ship location and weather conditions).

DAYS 3 - 7 | EXPLORING CANADA'S HIGH ARCTIC

Winding your way around the remote islands of the Canadian High Arctic aboard *Ultramarine*, the newest ship in

our fleet, you'll navigate the same icy inlets, channels and bays that fascinated legendary explorers of long ago as they searched for the fabled Northwest Passage, the great sea route at the top of the world. Designed to give polar adventurers unprecedented access to the hardest-to-reach places on the planet—and equipped with two onboard twin-engine helicopters for unparalleled access to areas only Quark Expeditions can bring you—this one-of-a-kind ship will take you beyond the familiar in polar exploration. Throughout your journey, your Expedition Team will work hard to give you a taste of the best the Canadian Arctic has to offer, immersing you in the heart of the Northwest Passage in under a week.



ARCTIC EXPRESS CANADA
 The Heart of the Northwest Passage
 Onboard the *Ultramarine*
 Flights between Calgary and Resolute