

# Antarctica - Basecamp

## The best activity voyage in Antarctica



|                 |                         |
|-----------------|-------------------------|
| Title:          | Antarctica - Basecamp   |
| Dates:          | 11 Nov - 23 Nov, 2021   |
| Tripcode:       | PLA22-21                |
| Duration:       | 12 nights               |
| Ship:           | m/v Plancius            |
| Embarkation:    | Ushuaia                 |
| Disembarkation: | Ushuaia                 |
| Language:       | English speaking voyage |

## ITINERARY

*PLEASE NOTE: All itineraries are for guidance only. Programs may vary depending on local ice and weather conditions and in order to take advantage of opportunities to see wildlife. The on-board expedition leader determines the final itinerary. Itineraries may mention places that require permission to land, which must be granted by the relevant national authorities. Such permission is not granted prior to the publishing of these itineraries. Flexibility is paramount for expedition cruises. Average cruising speed of m/v Plancius is 10,5 knots.*

The Antarctic Peninsula Basecamp cruise offers you a myriad of ways to explore and enjoy the Antarctic Region. This expedition allows you to hike, snowshoe, kayak, go mountaineering, and even camp out under the Southern Polar skies.

### Day 1: End of the world, start of a journey

Your voyage begins where the world drops off. Ushuaia, Argentina, reputed to be the southernmost city on the planet, is located on the far southern tip of South America. Starting in the afternoon, you embark from this small resort town on Tierra del Fuego, nicknamed “The End of the World,” and sail the mountain-fringed Beagle Channel for the remainder of the evening.

### Day 2 - 3: Path of the polar explorers

Over the next two days on the Drake Passage, you enjoy some of the same experiences encountered by the great polar explorers who first charted these regions: cool salt breezes, rolling seas, maybe even a fin whale spouting up sea spray. After passing the Antarctic Convergence – Antarctica’s natural boundary, formed when north-flowing cold waters collide with warmer sub-Antarctic seas – you are in the circum-Antarctic upwelling zone. Not only does the marine life change, the avian life changes too. Wandering albatrosses, grey-headed albatrosses, black-browed albatrosses, light-mantled sooty albatrosses, cape pigeons, southern fulmars, Wilson’s storm petrels, blue petrels, and Antarctic petrels are a few of the birds you might see.

### Day 4 - 10: Entering Antarctica

Gray stone peaks sketched with snow, towers of broken blue-white ice, and dramatically different wildlife below and above. You first pass the snow-capped Melchior Islands and Schollaert Channel, sailing between Brabant and Anvers Islands.

Places you might visit includes:

**Neumayer Channel** – The vessel may position itself here, launching its multiple basecamp activities from the protected waters around Wiencke Island. You can enjoy the splendors of this alpine environment at sea with Zodiac and kayaking trips, or if you’re in the mood for a walk, there are possible snowshoe hikes and soft-climb mountaineering options farther inland. Naturally, favorable weather conditions determine the possible activities.

**Port Lockroy** – After sailing through the Neumayer Channel, you may get a chance to visit the former British research station – now a museum and post office – of Port Lockroy on Goudier Island. You may also be able to partake in activities around Jougla Point, meeting gentoo penguins and blue-eyed shags. At the nearby sites, such as Damoy Point there may be the opportunity for snowshoeing to the old ski-way, this is also one of our favourite camping sites.

**Pléneau & Petermann Islands** – If the ice allows it, you can sail through the Lemaire Channel in search of Adélie penguins and blue-eyed shags. There's also a good chance you'll encounter humpback and minke whales here, as well as leopard seals. Kayaking, glacier walks, and more ambitious mountaineering trips are the potential activities of this location.

**Neko Harbour** – An epic landscape of mammoth glaciers and endless wind-carved snow, Neko Harbour offers opportunities for a Zodiac cruise and landing that afford the closest views of the surrounding alpine peaks.

**Paradise Bay** – You have the chance to make camp here like a true polar explorer, enjoying a supreme overnight Antarctic adventure.

**Errera Channel** – Possible sites in this area include Danco Island and Cuverville Island, but also the lesser known (though equally picturesque) Orne Island and Georges Point on Rongé Island.

On your last day of near-shore activities, you pass the Melchior Islands toward the open sea. Keep a sharp lookout for humpback whales in Dallmann Bay. You might also shoot for Half Moon Island, in the South Shetlands, with further chances for activities.

Conditions on the Drake Passage determine the exact time of departure.

## Day 11 - 12: Familiar seas, familiar friends

Your return voyage is far from lonely. While crossing the Drake, you're again greeted by the vast array of seabirds remembered from the passage south. But they seem a little more familiar to you now, and you to them.

## Day 13: There and back again

Every adventure, no matter how grand, must eventually come to an end. It's now time to disembark in Ushuaia, but with memories that will accompany you wherever your next adventure lies.

### Included in this voyage

- Voyage aboard the indicated vessel as indicated in the itinerary
- All meals throughout the voyage aboard the ship including snacks, coffee and tea.
- All shore excursions and activities throughout the voyage by Zodiac.
- Program of lectures by noted naturalists and leadership by experienced expedition staff.
- Free use of rubber boots and snowshoes.
- Luggage transfer from pick-up point to the vessel on the day of embarkation, in Ushuaia.
- Pre-scheduled group transfer from the vessel to the airport in Ushuaia (directly after disembarkation).
- All miscellaneous service taxes and port charges throughout the programme.
- Comprehensive pre-departure material.
- During our "Basecamp" departures, all offered activities (including camping, kayaking, snowshoe/hiking, mountaineering, photo workshop) as well as our standard included shore excursions and zodiac cruises) are free of charge.

### Excluded from this voyage

- Any airfare, whether on scheduled or charter flights
- Pre- and post- land arrangements.
- Passport and visa expenses.
- Government arrival and departure taxes.
- Meals ashore.
- Baggage, cancellation and personal insurance (which is strongly recommended).
- Excess baggage charges and all items of a personal nature such as laundry, bar, beverage charges and telecommunication charges.
- The customary gratuity at the end of the voyages for stewards and other service personnel aboard (guidelines will be provided).

## ACTIVITIES YOU CAN PARTICIPATE IN

### Camping

FREE



Special gear and field equipment will be provided. Camping is subject to weather, local site and environmental regulations.

### Kayaking

FREE



Basic kayaking experience is of advantage, but it is not a requirement. Physical fitness is essential. Kayaking is subject to weather and prevailing ice conditions.

### Mountaineering

FREE



Mountaineering knowledge is preferable, but not required. Physical fitness is essential. Mountaineering must be pre-booked prior to departure. Mountaineering is subject to weather and local site conditions.

### Photo Workshop

FREE



Participants with a special interest in photography will bring their personal photo equipment. The workshop must be pre-booked prior to departure.

## Snowshoeing

FREE



Snowshoe walking is easy and does not require any technical skills. The snowshoes will fit all boot sizes and can be used in combination with Oceanwide's rubber boots

# CABINS & PRICES

## Quadruple Porthole



1 porthole  
 2 upper & lower berths  
 Private shower & toilet  
 Desk & chair  
 Flatscreen TV  
 Telephone & WiFi (supplemented)  
 Hair dryer  
 Ample storage space  
 This cabin is suitable for families traveling with children, or passengers who do not require a twin or more luxurious cabin



Complete cabin  
 Price for the complete cabin, fully occupied.

34000 USD



Sharing berth  
 Share your cabin with others for the best price

8500 USD

## Triple Porthole



1 porthole  
 1 upper berth & 2 lower berths  
 Private shower & toilet  
 Desk & chair  
 Flatscreen TV  
 Telephone & WiFi (supplemented)  
 Hair dryer  
 Ample storage space  
 This cabin is suitable for families traveling with children, or passengers who do not require a twin or more luxurious cabin



Complete cabin  
 Price for the complete cabin, fully occupied.

31350 USD



Sharing berth  
 Share your cabin with others for the best price

10450 USD

## Twin Porthole



1 porthole  
 2 lower berths  
 Private shower & toilet  
 Desk & chair  
 Flatscreen TV  
 Telephone & WiFi (supplemented)  
 Hair dryer  
 Ample storage space



Complete cabin  
 Price for the complete cabin, fully occupied.

20900 USD



Single cabin  
 Price for the complete cabin occupied by 1 person (1.7x the shared rate).

17765 USD



Sharing berth  
 Share your cabin with others for the best price

10450 USD

## Twin Window



1 window  
2 lower berths  
Private shower & toilet  
Desk & chair  
Flatscreen TV  
Telephone & WiFi (supplemented)  
Hair dryer  
Ample storage space



Complete cabin  
Price for the complete cabin, fully occupied. 21900 USD



Single cabin  
Price for the complete cabin occupied by 1 person (1.7x the shared rate). 18615 USD



Sharing berth  
Share your cabin with others for the best price 10950 USD

## Twin Deluxe



2 windows  
2 lower berths  
Private shower & toilet  
Desk & chair  
Flatscreen TV  
Telephone & WiFi (supplemented)  
Hair dryer  
Ample storage space  
These cabins are corner cabins and are slightly more spacious than the normal twin porthole/window cabins



Complete cabin  
Price for the complete cabin, fully occupied. 23200 USD

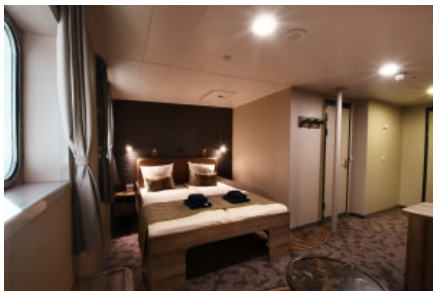


Single cabin  
Price for the complete cabin occupied by 1 person (1.7x the shared rate). 19720 USD



Sharing berth  
Share your cabin with others for the best price 11600 USD

## Superior



2 windows  
1 double bed  
1 sofa bed  
Private shower & toilet  
Desk & chair  
Flatscreen TV  
Telephone & WiFi (supplemented)  
Refrigerator  
Coffee & tea maker  
Hair dryer  
Ample storage space



Complete cabin  
Price for the complete cabin, fully occupied. 24600 USD



Single cabin  
Price for the complete cabin occupied by 1 person (1.7x the shared rate). 20910 USD