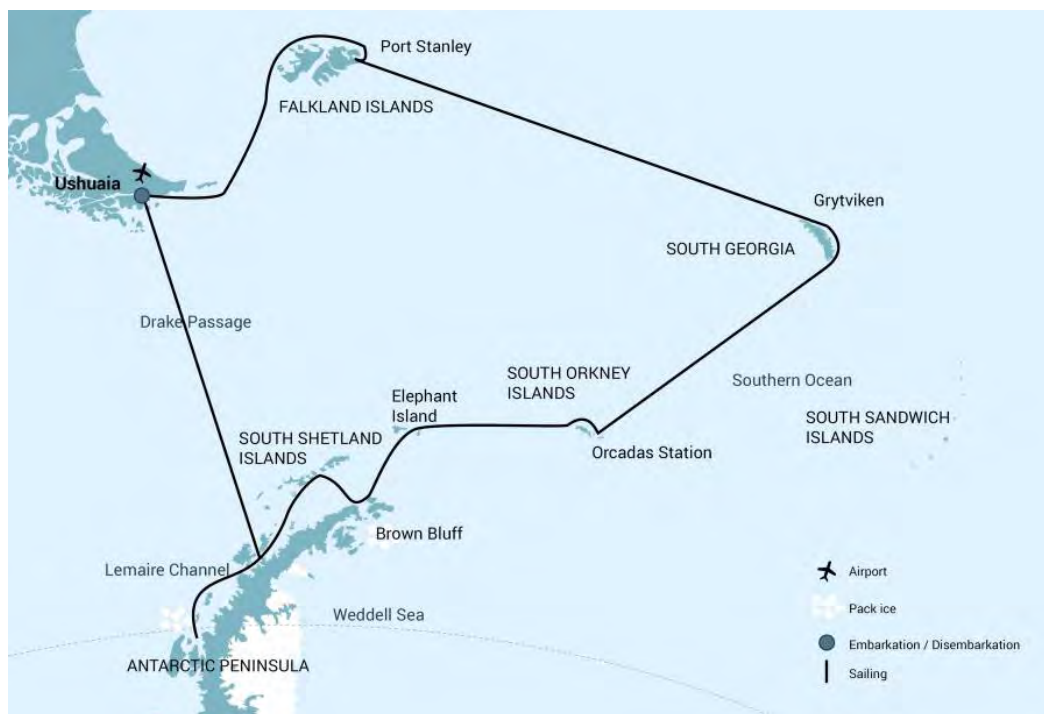


# Falkland Islands - South Georgia - Elephant Island - Antarctica - Polar Circle

*Meet at least six penguin species*



Title:	Falkland Islands - South Georgia - Elephant Island - Antarctica - Polar Circle
Dates:	24 Feb - 17 Mar, 2020
Tripcode:	HDS31-20
Duration:	22 nights
Ship:	<a href="#">m/v Hondius</a>
Embarkation:	Ushuaia
Disembarkation:	Ushuaia
Language:	English speaking voyage
More about:	<a href="#">Antarctica cruises</a> <a href="#">South Orkney Islands cruises</a> <a href="#">Antarctic Peninsula cruises</a> <a href="#">South Shetland Islands cruises</a> <a href="#">Falkland Islands cruises</a> <a href="#">South Georgia cruises</a>

## ITINERARY

*PLEASE NOTE: All itineraries are for guidance only. Programs may vary depending on local ice, weather, and wildlife conditions. The on-board expedition leader will determine the final itinerary. Flexibility is paramount for expedition cruises. Average cruising speed of m/v Hondius is 10.5 knots.*

### Included in this voyage

*Voyage aboard the indicated vessel as indicated in the itinerary*

## Day 1: End of the world, start of a journey

Your voyage begins where the world drops off. Ushuaia, Argentina, reputed to be the southernmost city on the planet, is located on the far southern tip of South America. Starting in the afternoon, you embark from this small resort town on Tierra del Fuego, nicknamed “The End of the World,” and sail the mountain-fringed Beagle Channel for the remainder of the evening.

## Day 2: The winged life of the westerlies

Several species of albatross follow the vessel into the westerlies, along with storm petrels, shearwaters, and diving petrels.

## Day 3: Finding the Falklands

The Falkland (Malvinas) Islands offer an abundance of wildlife that is easily approachable, though caution is always advised. These islands are largely unknown gems, the site of a 1982 war between the UK and Argentina. Not only do various species of bird live here, but chances are great you’ll see both Peale’s dolphins and Commerson’s dolphins in the surrounding waters.

During this segment of the voyage, you may visit the following sites:

**West Point Island** – This beautiful island hosts a bounty of birdlife, from shore birds near the landing site to black-browed albatrosses on the nest. Among them is a rookery of rockhopper penguins who have to undertake an incredible climb from the sea to get to their nests among the albatrosses.

**Saunders Island** – On Saunders Island you can see the black-browed albatross and its sometimes-clumsy landings, along with breeding imperial shags and rockhopper penguins. King penguins, Magellanic penguins, and gentoos are also found here.

## Day 4: The seat of Falklands culture

The capital of the Falklands and center of its culture, Port Stanley has some Victorian-era charm: colorful houses, well-tended gardens, and English-style pubs are all to be found here. You can also see several century-old clipper ships nearby,

*All meals throughout the voyage aboard the ship including snacks, coffee and tea.*

*All shore excursions and activities throughout the voyage by Zodiac.*

*Program of lectures by noted naturalists and leadership by experienced expedition staff.*

*Free use of rubber boots and snowshoes.*

*Luggage transfer from pick-up point to the vessel on the day of embarkation, in Ushuaia.*

*Pre-scheduled group transfer from the vessel to the airport in Ushuaia (directly after disembarkation).*

*All miscellaneous service taxes and port charges throughout the programme.*

*Comprehensive pre-departure material.*

### **Excluded from this voyage**

*Any airfare, whether on scheduled or charter flights.*

*Pre- and post- land arrangements.*

*Passport and visa expenses.*

*Government arrival and departure taxes.*

*Meals ashore.*

*Baggage, cancellation and personal insurance (which is mandatory).*

*Excess baggage charges and all items of a personal nature such as laundry, bar, beverage charges and telecommunication charges.*

*The customary gratuity at the end of the voyages for stewards and other service personnel aboard (guidelines will be provided).*

silent witnesses to the hardships of 19th century sailors. The small but interesting museum is also worth a visit, covering the early days of settlement up to the Falklands War. Approximately 2,100 people live in Port Stanley. Feel free to wander at will, though be aware that admission fees to local attractions are not included in the voyage.

### **Day 5 – 6: Once more to the sea**

En route to South Georgia, you now cross the Antarctic Convergence. The temperature cools considerably within the space of a few hours, and nutritious water rises to the surface of the sea due to colliding water columns. This phenomenon attracts a multitude of seabirds near the ship, including several species of albatross, shearwaters, petrels, prions, and skuas.

### **Day 7 – 10: South Georgia journey**

Today you arrive at the first South Georgia activity site. Please keep in mind that weather conditions in this area can be challenging, largely dictating the program.

Over the next several days, you have a chance to visit the following sites:

**Prion Island** – This location is closed during the early part of the wandering albatross breeding season (November 20 – January 7). From January on, the breeding adults have found their partners and are sitting on eggs or nursing their chicks. Enjoy witnessing the gentle nature of these animals, which possess the largest wingspan of any birds in the world.

**Fortuna Bay** – Near beaches inhabited by various penguins and seals, you have the chance to follow the final leg of Shackleton's route to the abandoned whaling village of Stromness. This path cuts across the mountain pass beyond Shackleton's Waterfall, and as the terrain is partly swampy, be prepared to cross a few small streams.

**Salisbury Plain, St. Andrews Bay, Gold Harbour** – These sites not only house the three largest king penguin colonies in South Georgia, they're also three of the world's largest breeding beaches for Antarctic fur seals. Literarily millions breed on South Georgia during December and January. By February the young fur seals are curious and playful and fill the surf with life and fun and large elephant seals come to the beaches to molt.

**Grytviken** – In this abandoned whaling station, king penguins walk the streets and elephant seals lie around like they own the place – because they basically do. Here you might be able to see the South Georgia Museum as well as Shackleton's grave.

### Day 11: Southward bound

There may be sea ice on this route, and at the edge of the ice some south polar skuas and snow petrels could join the other seabirds trailing the vessel south.

### Day 12: The scenic vistas of South Orkney

Depending on the conditions, you might visit Orcadas Base, an Argentine scientific station on Laurie Island in the South Orkney archipelago. The personnel here will happily show you their facility, where you can enjoy expansive views of the surrounding glaciers. If a visit isn't possible, you may instead land in Signy Island's Shingle Cove.

### Day 13: Legendary Elephant Island

You've now completed roughly the same route (albeit in the opposite direction) as Sir Ernest Shackleton did using only a small life boat, the *James Caird*, in spring of 1916. Watching Elephant Island materialize on the horizon after crossing all that water, it's hard not to marvel at how he and his five-man crew accomplished that feat.

The purpose of Shackleton's crossing was to rescue 22 shipwrecked members of his Imperial Trans-Antarctic Expedition, also known as the Endurance Expedition, who were stranded on Elephant Island. For four and a half months, Shackleton undertook this legendary rescue.

Conditions on Elephant Island are severe. The coastline is mostly made up of vertical rock and ice cliffs highly exposed to the elements. If possible you will take the Zodiacs to Point Wild, where the marooned members of Shackleton's expedition miraculously managed to survive.

### Day 14: Along the Antarctic Peninsula

If ice permits, you sail into the Antarctic Sound at the northwestern edge of the Weddell Sea. Here colossal tabular icebergs herald your arrival to the eastern edges of the Antarctic Peninsula. Brown Bluff is a potential location for a landing, where you may get the chance to set foot on the continent.

## Day 15: Scenes of South Shetland

The volcanic islands of the South Shetlands are windswept and often cloaked in mist, but they do offer subtle pleasures: There's a wide variety of flora (mosses, lichens, flowering grasses) and no small amount of fauna (gentoo penguins, chinstrap penguins, southern giant petrels).

In Deception Island, the ship plunges through Neptune's Bellows and into the flooded caldera. Here you find hot springs, an abandoned whaling station, and thousands of cape petrels – along with kelp gulls, brown and south polar skuas, and Antarctic terns. A good hike is a possibility in this fascinating and desolate volcanic landscape.

## Day 16 – 20: Onward into Antarctica

Gray stone peaks sketched with snow, towers of broken blue-white ice, and unique polar wildlife below and above welcome you into the otherworldly expanse of Antarctica. You enter the area around Gerlache Strait, venturing into one of the most beautiful settings Antarctica has to offer.

Sites you may visit here include:

**Neko Harbour** – An epic landscape of mammoth glaciers and endless wind-carved snow, Neko Harbour offers opportunities for a Zodiac cruise and landing that afford the closest views of the surrounding alpine peaks.

**Paradise Bay** – You may be able to take a Zodiac cruise in these sprawling, ice-flecked waters, where there's a good chance you'll encounter humpback and minke whales.

**Pléneau & Petermann Islands** – If the ice allows it, you could sail through the Lemaire Channel in search of Adélie penguins and blue-eyed shags. There is also a possibility you'll encounter humpback and minke whales here, as well as leopard seals.

The aim is then to cut south, reaching Crystal Sound and the Antarctic Circle. You may make a landing at Detaille Island and visit an abandoned British research station, taking in the limitless landscape. Afterward you venture back into the area around Lemaire Channel and the Gerlache Strait.

As with all of our Antarctic trips, conditions on the Drake Passage determine the exact time of departure.

### **Day 21 – 22: Familiar seas, familiar friends**

Your return voyage is far from lonely. While crossing the Drake, you're again greeted by the vast array of seabirds remembered from the passage south. But they seem a little more familiar to you now, and you to them.

### **Day 23: There and back again**

Every adventure, no matter how grand, must eventually come to an end. It's now time to disembark in Ushuaia, but with memories that will accompany you wherever your next adventure lies.

---

## **M/V HONDIUS**

---

Hondius is the first-registered Polar Class 6 vessel in the world, optimized for the most innovative exploratory voyages throughout the Arctic and Antarctica. [Full ship info >>](#)

## ACTIVITIES YOU CAN PARTICIPATE IN

### Polar Diving

ON REQUEST



#### **Dive into the beautiful blue deeps.**

If you're searching for a way to expand your diving experience, join us on one of our diving cruises. Experienced divers will have the chance to glide through the amazing blue waters of the Arctic or Antarctic.

### Hondius Special Activities

FREE



#### **Hondius Special Activities**

Being a *Hondius* passenger comes with its share of perks, among them an extensive array of activities entirely unique to the ship itself. In addition to vibrant musical acts and performances, *Hondius* offers a wide range of interactive workshops that explore such topics as astronomy, navigation, and other related fields. These interactive workshops, captivating exhibitions, and vibrant performances are planned both on the ship as well as out in nature.

## CABINS & PRICES

### Quadruple Porthole



- 2 portholes
- 2 upper & lower berths
- Small sofa
- Private shower & toilet
- Flatscreen TV
- Desk & chair
- Telephone and WiFi (supplemented)
- Hair dryer
- Cabinet
- Wardrobe

This cabin is suitable for families traveling with children, or passengers who do not require a twin or more luxurious cabin



Sharing berth  
Share your cabin with others for the best price

15350 USD



Complete cabin  
Price for the complete cabin, fully occupied.

61400 USD

### Triple Porthole



- 2 portholes
- 1 upper berth & 2 lower berths
- Small sofa
- Private shower & toilet
- Flatscreen TV
- Desk & chair
- Telephone and WiFi (supplemented)
- Hair dryer
- Cabinet
- Wardrobe

This cabin is suitable for families traveling with children, or passengers who do not require a twin or more luxurious cabin



Sharing berth  
Share your cabin with others for the best price

16700 USD



Complete cabin  
Price for the complete cabin, fully occupied.

50100 USD



## Twin Porthole



2 portholes  
 2 single beds  
 Small sofa  
 Private shower & toilet  
 Flatscreen TV  
 Desk & chair  
 Telephone and WiFi (supplemented)  
 Hair dryer  
 Cabinet  
 Wardrobe  
 Safe



**Sharing berth**  
 Share your cabin with others for the best price **18500 USD**



**Single cabin**  
 Price for the complete cabin occupied by 1 person (1.7x the shared rate). **31450 USD**



**Complete cabin**  
 Price for the complete cabin, fully occupied. **37000 USD**

## Twin Window



1 window  
 2 single beds  
 Small sofa  
 Private shower & toilet  
 Flatscreen TV  
 Desk & chair  
 Telephone and WiFi (supplemented)  
 Hair dryer  
 Cabinet  
 Wardrobe



**Sharing berth**  
 Share your cabin with others for the best price **19300 USD**



**Single cabin**  
 Price for the complete cabin occupied by 1 person (1.7x the shared rate). **32810 USD**



**Complete cabin**  
 Price for the complete cabin, fully occupied. **38600 USD**

## Twin Deluxe



2 windows  
2 single beds  
Sofa  
Private shower & toilet  
Flatscreen TV  
Desk & chair  
Telephone and WiFi (supplemented)  
Refrigerator  
Coffee & tea maker  
Bathrobe  
Hair dryer  
Cabinet  
Wardrobe



Sharing berth  
Share your cabin with others for the best price  
20700 USD



Single cabin  
Price for the complete cabin occupied by 1 person (1.7x the shared rate).  
35190 USD



Complete cabin  
Price for the complete cabin, fully occupied.  
41400 USD

## Superior



2 windows  
1 double bed  
Sofa  
Private shower & toilet  
Flatscreen TV  
Desk & chair  
Telephone and WiFi (supplemented)  
Refrigerator  
Coffee & tea maker  
Bathrobe  
Hair dryer  
Cabinet  
Wardrobe



Single cabin  
Price for the complete cabin occupied by 1 person (1.7x the shared rate).  
37655 USD



Complete cabin  
Price for the complete cabin, fully occupied.  
44300 USD

## Junior Suite



- 1 double window
- 1 double bed
- Private shower & toilet
- Flatscreen TV
- Desk & chair
- Telephone and WiFi (supplemented)
- Refrigerator
- Coffee & tea maker
- Bathrobe
- Hair dryer
- Cabinet
- Wardrobe



Single cabin

Price for the complete cabin occupied by 1 person (1.7x the shared rate).

40290 USD



Complete cabin

Price for the complete cabin, fully occupied.

47400 USD

## Grand Suite with private balcony



- 1 double window
- 1 double bed
- Sofa
- Private balcony
- Private shower & toilet
- Flatscreen TV
- Desk & chair
- Telephone and WiFi (supplemented)
- Refrigerator
- Coffee & tea maker
- Bathrobe
- Hair dryer
- Cabinet
- Wardrobe



Single cabin

Price for the complete cabin occupied by 1 person (1.7x the shared rate).

46325 USD



Complete cabin

Price for the complete cabin, fully occupied.

54500 USD

## Hondius Suite



- 4 windows
- 1 double bed
- Sofa
- Private shower & toilet
- Desk & chair
- Flatscreen TV
- Telephone and WiFi (supplemented)
- Refrigerator
- Coffee & tea maker
- Bathrobe
- Hair dryer
- Cabinet
- Walk-in closet



Single cabin

53295 USD

Price for the complete cabin occupied by 1 person (1.7x the shared rate).



Complete cabin

62700 USD

Price for the complete cabin, fully occupied.